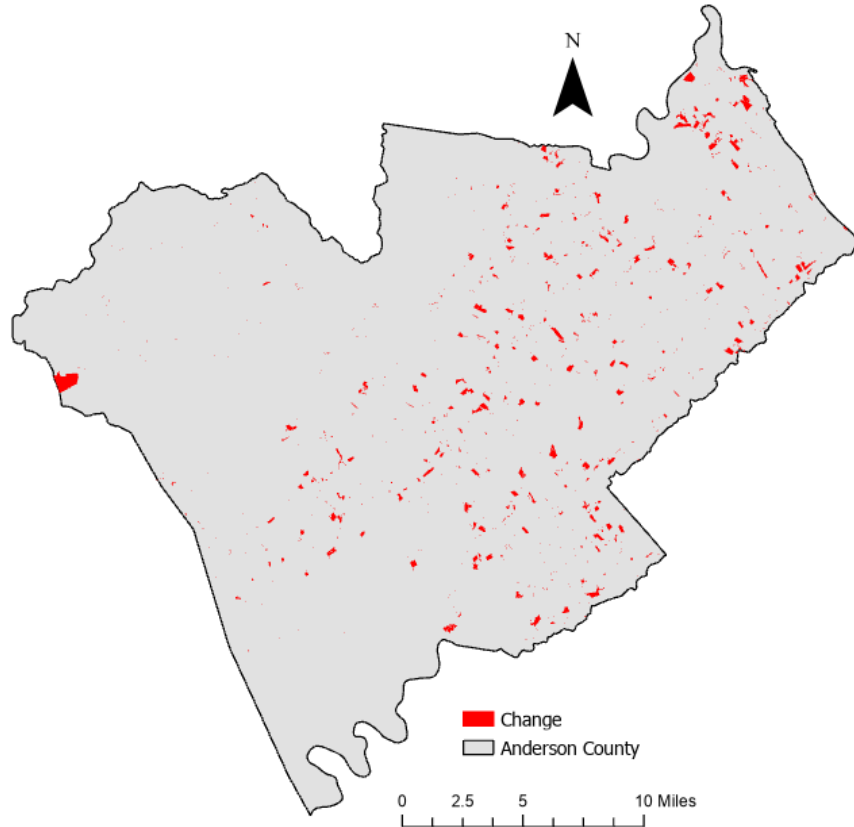


Anderson County, Tennessee

Agriculture, Farm, and Forest Land Loss

2014-2023

This map displays Anderson County, TN agriculture, farm and forest land parcels converted to alternative land uses from 2014-2023. Parcels converted out of agriculture, farm and forest land are highlighted in red.



Conversion of Anderson County, TN agriculture, farm and forest land to alternative uses (2014-2023)

Type of change	Number of parcels converted	Number of acres converted
Agriculture to Residential	2,924	1,325.5
Agriculture to Commercial	87	10.7
Agriculture to *Other	284	96.5
Farm to Residential	2,159	1,098.3
Farm to Commercial	40	36.0
Farm to Other	443	392.4
Forest to Residential	1,226	520.0
Forest to Commercial	24	1.2
Forest to Other	154	15.1
Totals	7,341	3,495.70

*Other includes city, county, state, federal, industrial, religious, educational, science, charity, state assessed, or local utility.

Data source: Tennessee Comptroller of the Treasury and Anderson County Assessor of Property.