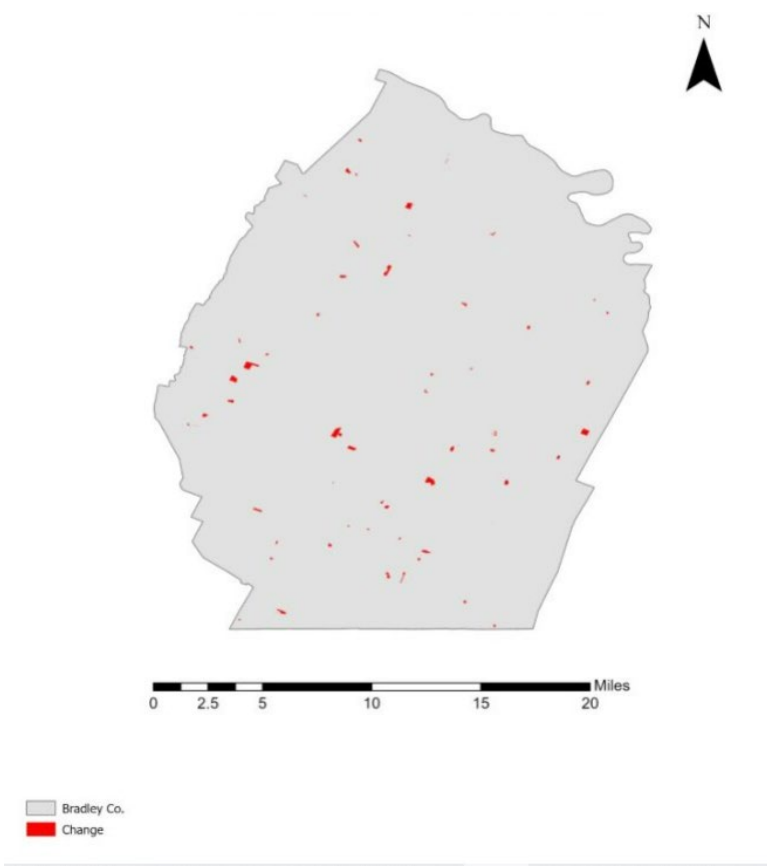


Bradley County, Tennessee

Agriculture, Farm, and Forest Land Loss

2022-2023

This map displays Bradley County, TN agriculture, farm and forest land parcels converted to alternative land uses from 2022-2023. Parcels converted out of agriculture, farm and forest land are highlighted in red.



Conversion of Bradley County, TN agriculture, farm and forest land to alternative uses (2022-2023)

Type of change	Number of parcels converted	Number of acres converted
Agriculture to Residential	92	447.5
Agriculture to Commercial	0	0
Agriculture to *Other	8	182.4
Farm to Residential	48	87.4
Farm to Commercial	0	0
Farm to Other	2	99
Forest to Residential	23	93.1
Forest to Commercial	0	0
Forest to Other	1	42
Totals	174	950.8

*Other includes city, county, state, federal, industrial, religious, educational, science, charity, state assessed, or local utility.
 Data source: Tennessee Comptroller of the Treasury and Bradley County Assessor of Property.