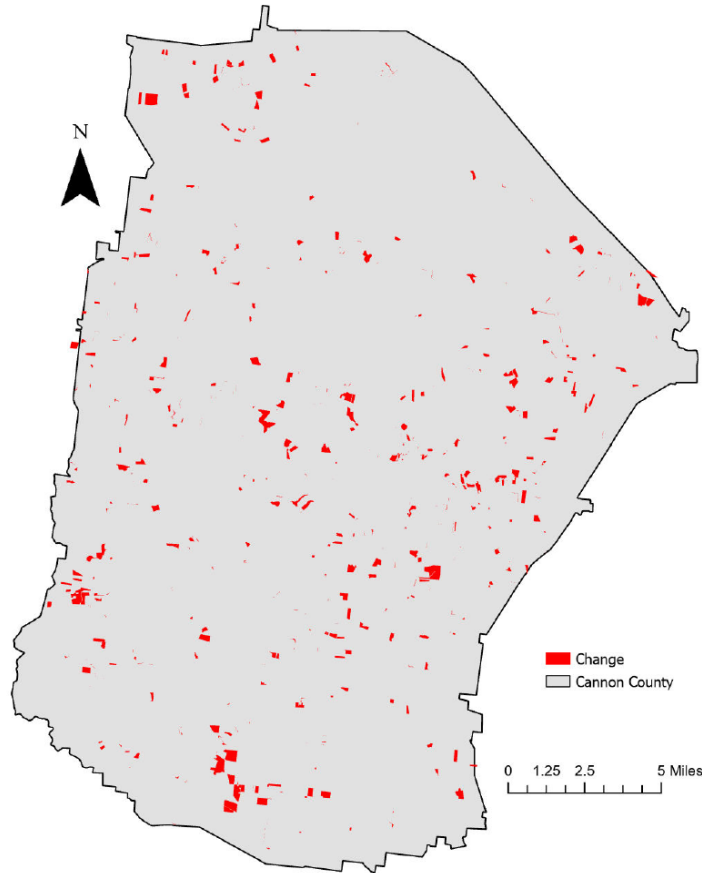


Cannon County, Tennessee

Agriculture, Farm, and Forest Land Loss

2015-2023

This map displays Cannon County, TN agriculture, farm and forest land parcels converted to alternative land uses from 2015-2023. Parcels converted out of agriculture, farm and forest land are highlighted in red.



Conversion of Cannon County, TN agriculture, farm and forest land to alternative uses (2015-2023)

Type of change	Number of parcels converted	Number of acres converted
Agriculture to Residential	847	2,402.1
Agriculture to Commercial	8	34.0
Agriculture to *Other	30	40.4
Farm to Residential	175	399.8
Farm to Commercial	3	5.8
Farm to Other	3	3.5
Forest to Residential	4	.14
Forest to Commercial	0	0
Forest to Other	0	0
Totals	1,070	2,885.7

*Other includes city, county, state, federal, industrial, religious, educational, science, charity, state assessed, or local utility.

Data source: Tennessee Comptroller of the Treasury and Cannon County Assessor of Property.