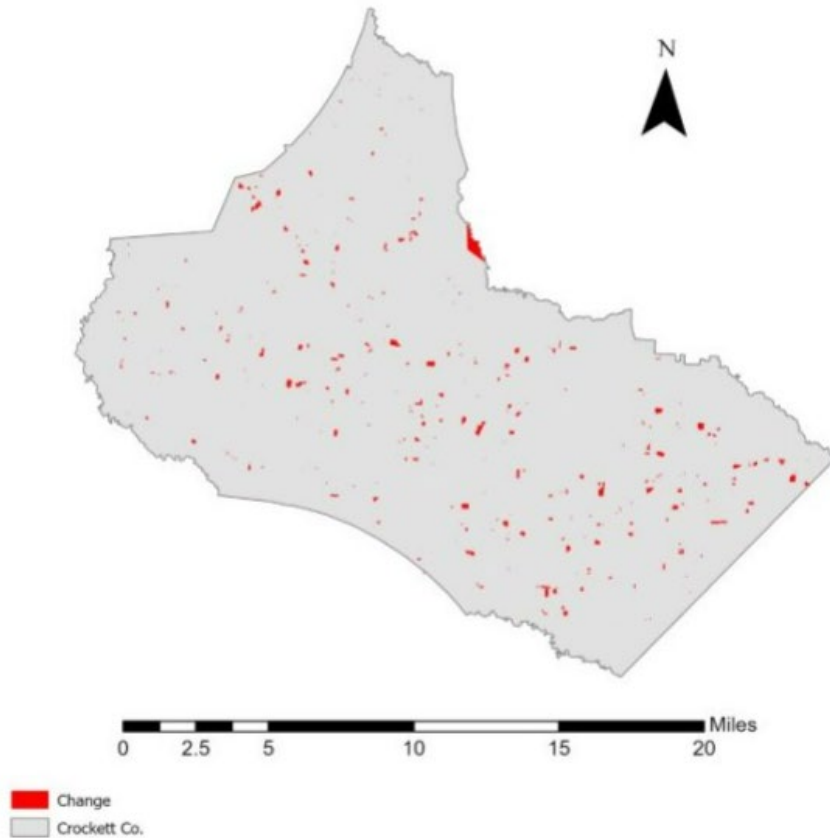


# Crockett County, Tennessee

## Agriculture, Farm, and Forest Land Loss

### 2014-2023

This map displays Crockett County, TN agriculture, farm and forest land parcels converted to alternative land uses from 2014-2023. Parcels converted out of agriculture, farm and forest land are highlighted in red.



Conversion of Crockett County, TN agriculture, farm and forest land to alternative uses (2014-2023)

Type of change	Number of parcels converted	Number of acres converted
Agriculture to Residential	3,178	1,631.9
Agriculture to Commercial	125	114.1
Agriculture to *Other	204	215
Farm to Residential	63	61.2
Farm to Commercial	10	60.2
Farm to Other	2	0.01
Forest to Residential	0	0
Forest to Commercial	0	0
Forest to Other	0	0
<b>Totals</b>	<b>3,582</b>	<b>2,081.9</b>

\*Other includes city, county, state, federal, industrial, religious, educational, science, charity, state assessed, or local utility.  
Data source: Tennessee Comptroller of the Treasury and Crockett County Assessor of Property.