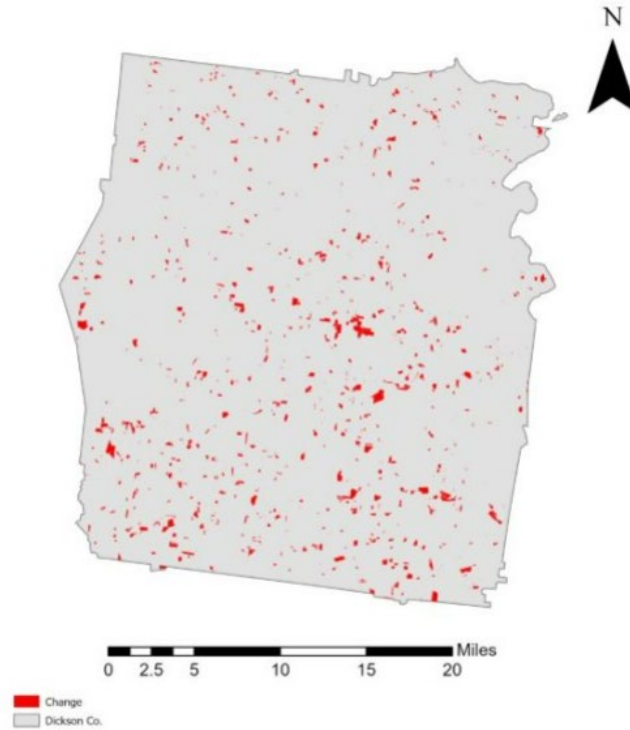


Dickson County, Tennessee

Agriculture, Farm, and Forest Land Loss

2014-2023

This map displays Dickson County, TN agriculture, farm and forest land parcels converted to alternative land uses from 2014-2023. Parcels converted out of agriculture, farm and forest land are highlighted in red.



Conversion of Dickson County, TN agriculture, farm and forest land to alternative uses (2014-2023)

Type of change	Number of parcels converted	Number of acres converted
Agriculture to Residential	6,121	5,184.40
Agriculture to Commercial	97	227.9
Agriculture to *Other	256	516.9
Farm to Residential	2,627	2,068.20
Farm to Commercial	44	27
Farm to Other	86	169.7
Forest to Residential	1,077	791.1
Forest to Commercial	12	18.6
Forest to Other	26	2.2
Totals	10,346	9,006

*Other includes city, county, state, federal, industrial, religious, educational, science, charity, state assessed, or local utility.
Data source: Tennessee Comptroller of the Treasury and Dickson County Assessor of Property.