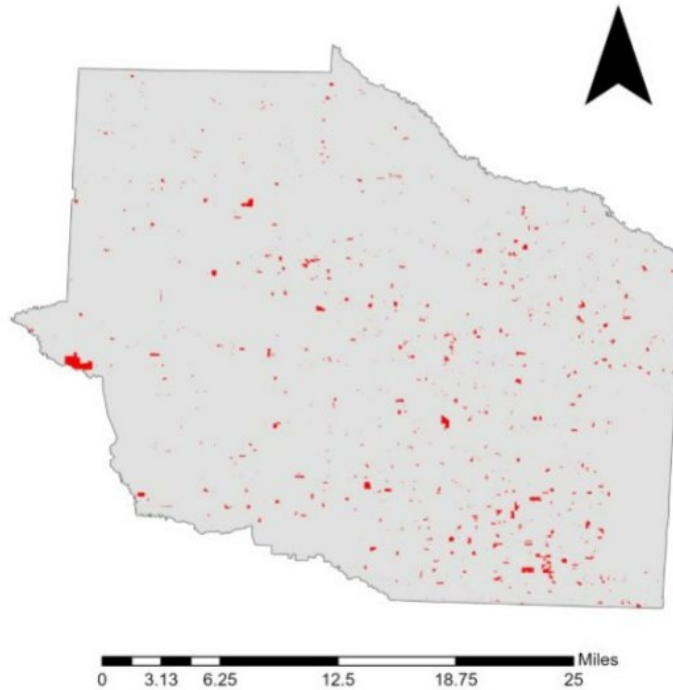


Gibson County, Tennessee

Agriculture, Farm, and Forest Land Loss

2014-2023

This map displays Gibson County, TN agriculture, farm and forest land parcels converted to alternative land uses from 2014-2023. Parcels converted out of agriculture, farm and forest land are highlighted in red.



■ Change
■ Gibson Co.

Conversion of Gibson County, TN agriculture, farm and forest land to alternative uses (2014-2023)

Type of change	Number of parcels converted	Number of acres converted
Agriculture to Residential	7,578	4,133.90
Agriculture to Commercial	200	70.3
Agriculture to *Other	469	510.5
Farm to Residential	398	281.8
Farm to Commercial	39	64.1
Farm to Other	17	373.1
Forest to Residential	0	0
Forest to Commercial	0	0
Forest to Other	0	0
Totals	8,701	5,434

*Other includes city, county, state, federal, industrial, religious, educational, science, charity, state assessed, or local utility.
 Data source: Tennessee Comptroller of the Treasury and Gibson County Assessor of Property.