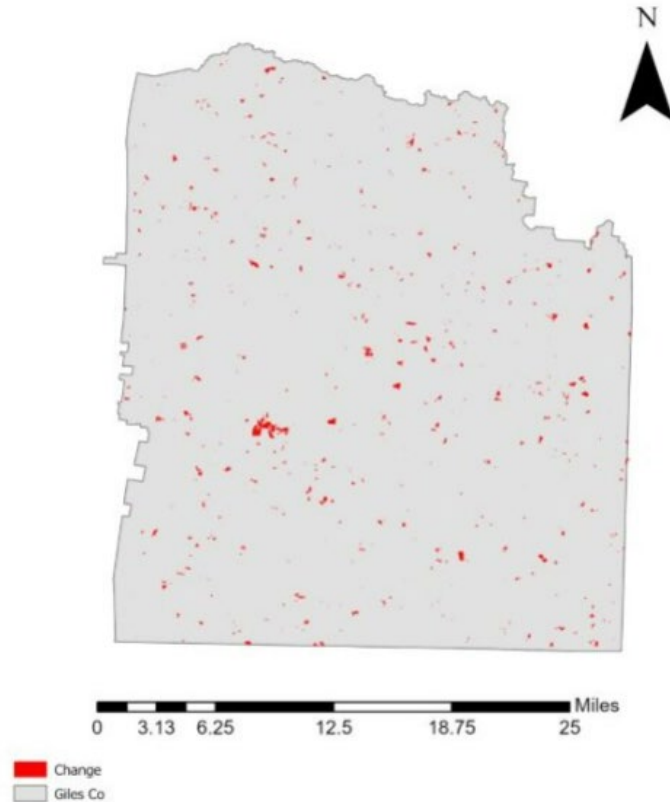


Giles County, Tennessee

Agriculture, Farm, and Forest Land Loss

2014-2023

This map displays Giles County, TN agriculture, farm and forest land parcels converted to alternative land uses from 2014-2023. Parcels converted out of agriculture, farm and forest land are highlighted in red.



Conversion of Giles County, TN agriculture, farm and forest land to alternative uses (2014-2023)

Type of change	Number of parcels converted	Number of acres converted
Agriculture to Residential	5,464	3,279.30
Agriculture to Commercial	142	31.9
Agriculture to *Other	403	161.9
Farm to Residential	879	469.9
Farm to Commercial	32	284.1
Farm to Other	56	95
Forest to Residential	128	48.3
Forest to Commercial	2	0.02
Forest to Other	4	1.05
Totals	7,110	4,371

*Other includes city, county, state, federal, industrial, religious, educational, science, charity, state assessed, or local utility.
Data source: Tennessee Comptroller of the Treasury and Giles County Assessor of Property.