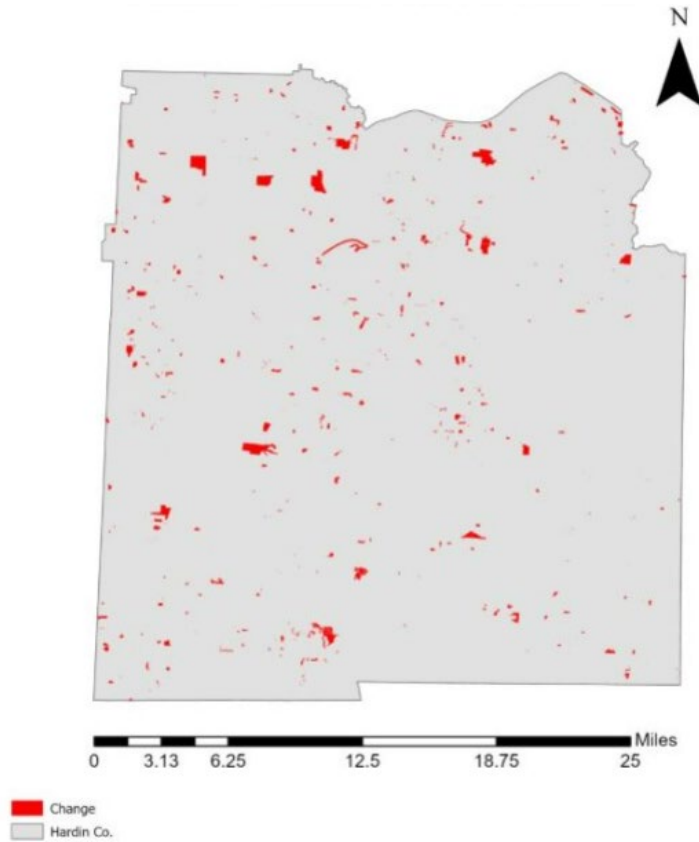


Hardin County, Tennessee

Agriculture, Farm, and Forest Land Loss

2014-2023

This map displays Hardin County, TN agriculture, farm and forest land parcels converted to alternative land uses from 2014-2023. Parcels converted out of agriculture, farm and forest land are highlighted in red.



Conversion of Hardin County, TN agriculture, farm and forest land to alternative uses (2014-2023)

| Type of change | Number of parcels converted | Number of acres converted |
|----------------------------|-----------------------------|---------------------------|
| Agriculture to Residential | 2,978 | 1,561.4 |
| Agriculture to Commercial | 59 | 18.7 |
| Agriculture to *Other | 178 | 953.3 |
| Farm to Residential | 3,038 | 1,885.2 |
| Farm to Commercial | 41 | 189.2 |
| Farm to Other | 175 | 296.2 |
| Forest to Residential | 1,426 | 1,019.0 |
| Forest to Commercial | 23 | 2.2 |
| Forest to Other | 94 | 138.2 |
| Totals | 8,012 | 6,063 |

*Other includes city, county, state, federal, industrial, religious, educational, science, charity, state assessed, or local utility.
Data source: Tennessee Comptroller of the Treasury and Hardin County Assessor of Property.