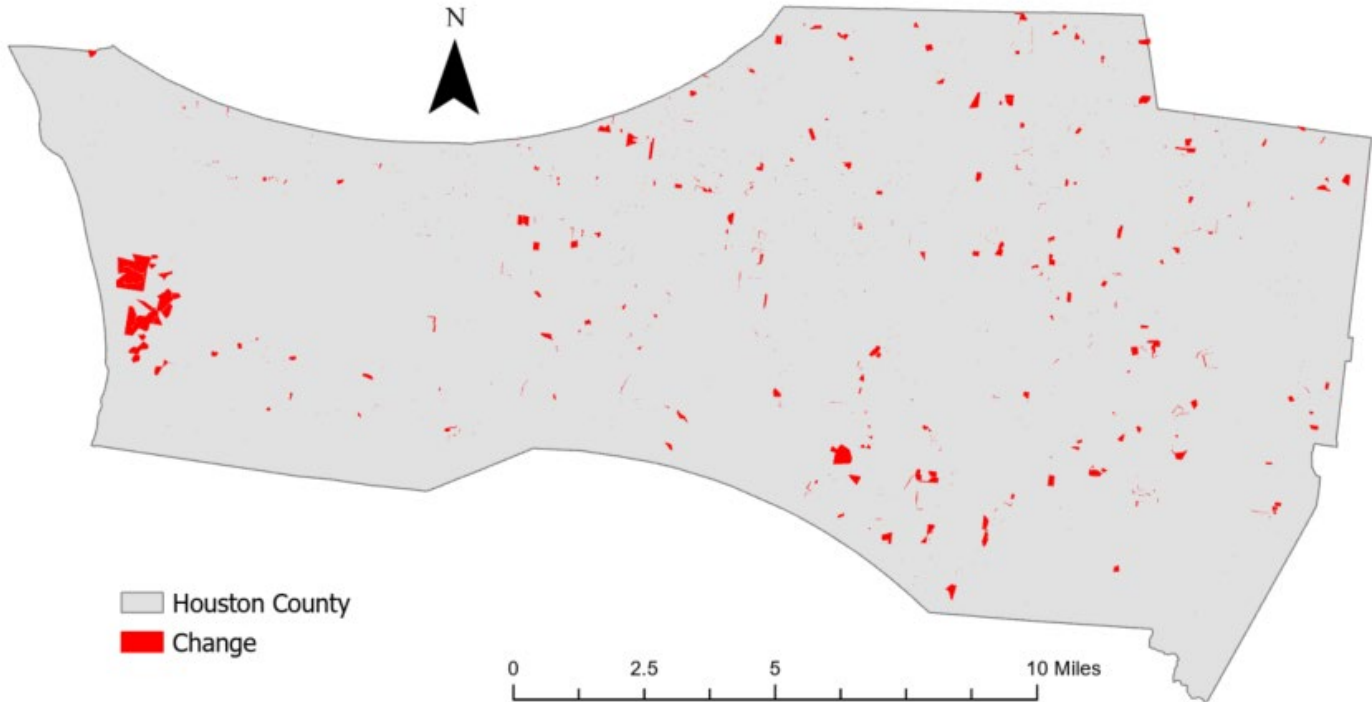


Houston County, Tennessee

Agriculture, Farm, and Forest Land Loss

2015-2023

This map displays Houston County, TN agriculture, farm and forest land parcels converted to alternative land uses from 2015-2023. Parcels converted out of agriculture, farm and forest land are highlighted in red.



Conversion of Houston County, TN agriculture, farm and forest land to alternative uses (2015-2023)

Type of change	Number of parcels converted	Number of acres converted
Agriculture to Residential	1,267	559.1
Agriculture to Commercial	28	0.7
Agriculture to *Other	108	6.8
Farm to Residential	954	982.3
Farm to Commercial	13	26.9
Farm to Other	65	3.8
Forest to Residential	339	199.1
Forest to Commercial	10	0.4
Forest to Other	32	6.1
Totals	2,816	1,785.2

*Other includes city, county, state, federal, industrial, religious, educational, science, charity, state assessed, or local utility.
 Data source: Tennessee Comptroller of the Treasury and Houston County Assessor of Property.