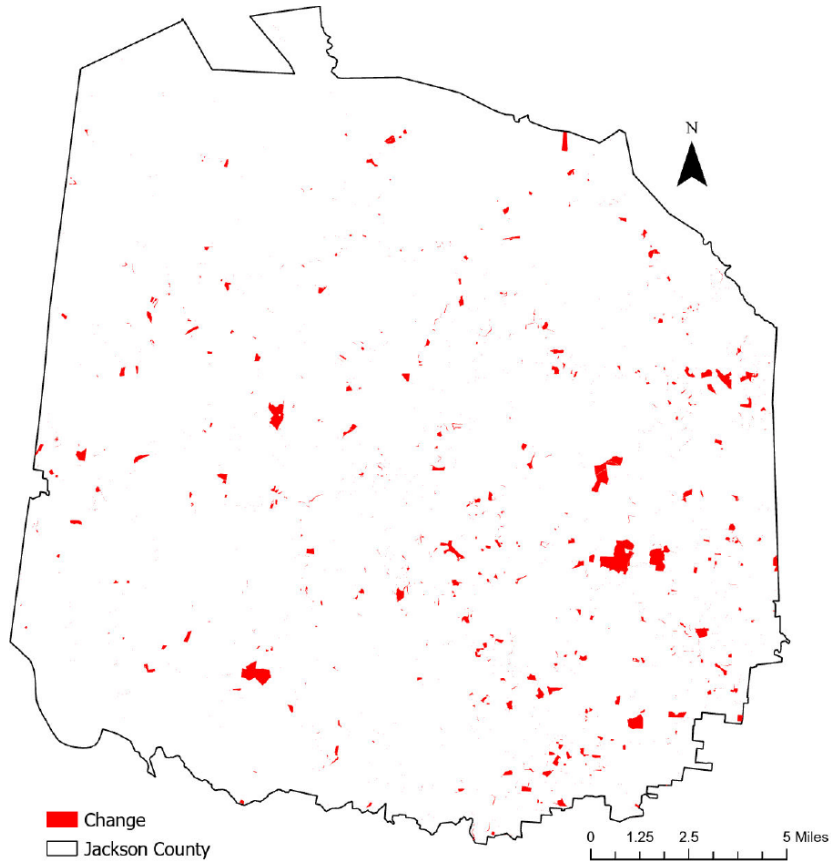


# Jackson County, Tennessee

## Agriculture, Farm, and Forest Land Loss

### 2015-2023

This map displays Jackson County, TN agriculture, farm and forest land parcels converted to alternative land uses from 2015-2023. Parcels converted out of agriculture, farm and forest land are highlighted in red.



Conversion of Jackson County, TN agriculture, farm and forest land to alternative uses (2015-2023)

Type of change	Number of parcels converted	Number of acres converted
Agriculture to Residential	3,403	2,135.7
Agriculture to Commercial	32	8.4
Agriculture to *Other	301	630.0
Farm to Residential	379	257.2
Farm to Commercial	2	0.0
Farm to Other	15	17.7
Forest to Residential	0	0
Forest to Commercial	0	0
Forest to Other	0	0
<b>Totals</b>	<b>4,132</b>	<b>3,049.1</b>

\*Other includes city, county, state, federal, industrial, religious, educational, science, charity, state assessed, or local utility.  
Data source: Tennessee Comptroller of the Treasury and Jackson County Assessor of Property.