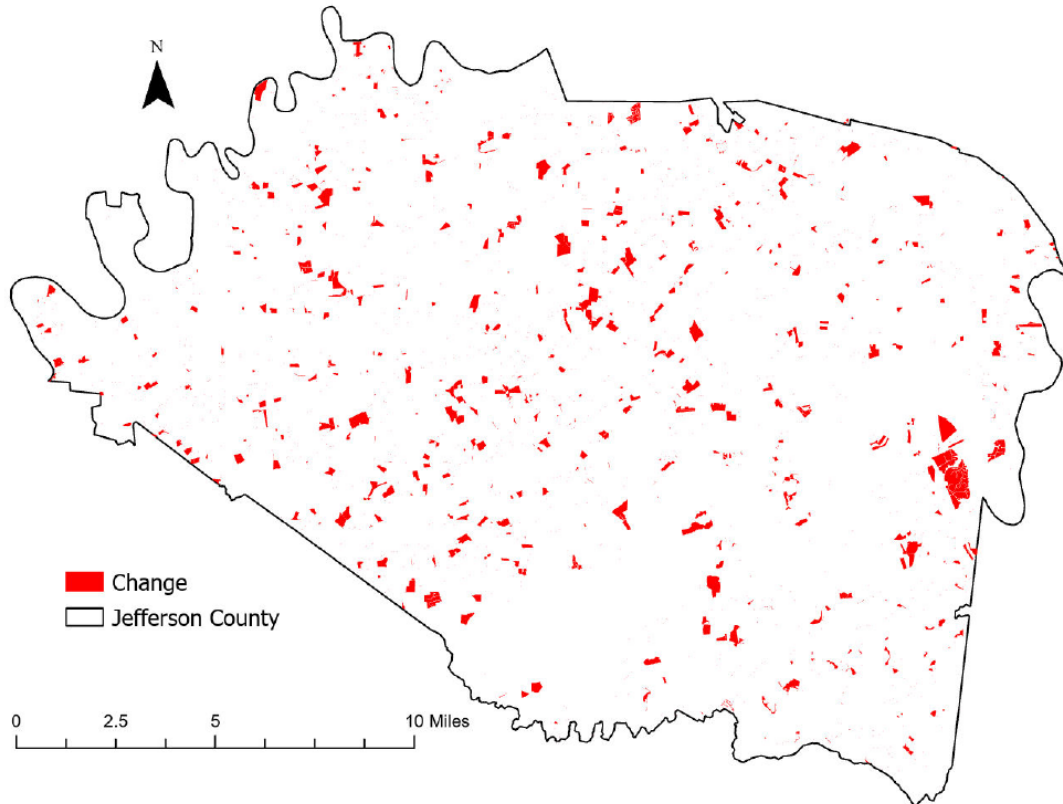


Jefferson County, Tennessee

Agriculture, Farm, and Forest Land Loss

2014-2023

This map displays Jefferson County, TN agriculture, farm and forest land parcels converted to alternative land uses from 2014-2023. Parcels converted out of agriculture, farm and forest land are highlighted in red.



Conversion of Jefferson County, TN agriculture, farm and forest land to alternative uses (2014-2023)

Type of change	Number of parcels converted	Number of acres converted
Agriculture to Residential	6,502	4,561.9
Agriculture to Commercial	168	81.0
Agriculture to *Other	261	157.9
Farm to Residential	2,275	1,494.6
Farm to Commercial	43	5.4
Farm to Other	73	23.0
Forest to Residential	396	201.7
Forest to Commercial	13	77.4
Forest to Other	8	6.7
Totals	9,739	6,609.6

*Other includes city, county, state, federal, industrial, religious, educational, science, charity, state assessed, or local utility.
Data source: Tennessee Comptroller of the Treasury and Jefferson County Assessor of Property.