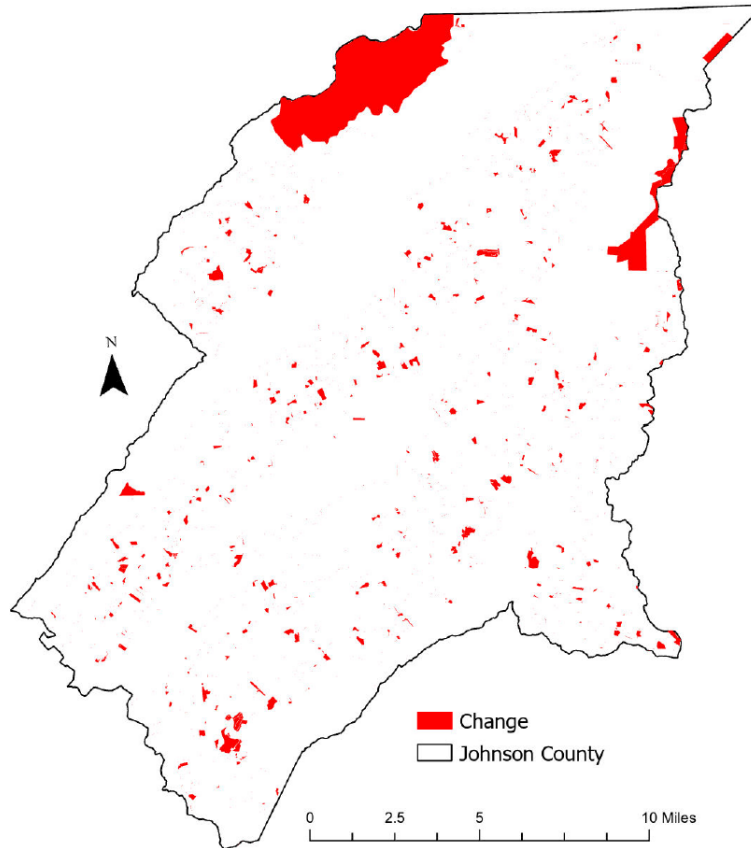


Johnson County, Tennessee

Agriculture, Farm, and Forest Land Loss

2014-2023

This map displays Johnson County, TN agriculture, farm and forest land parcels converted to alternative land uses from 2014-2023. Parcels converted out of agriculture, farm and forest land are highlighted in red.



Conversion of Johnson County, TN agriculture, farm and forest land to alternative uses (2014-2023)

Type of change	Number of parcels converted	Number of acres converted
Agriculture to Residential	5,060	2,448.7
Agriculture to Commercial	82	24.1
Agriculture to *Other	615	7,182.3
Farm to Residential	884	508.9
Farm to Commercial	9	0.0
Farm to Other	100	225.1
Forest to Residential	3	0.1
Forest to Commercial	0	0
Forest to Other	0	0
Totals	6,753	10,389.1

*Other includes city, county, state, federal, industrial, religious, educational, science, charity, state assessed, or local utility.
Data source: Tennessee Comptroller of the Treasury and Johnson County Assessor of Property.