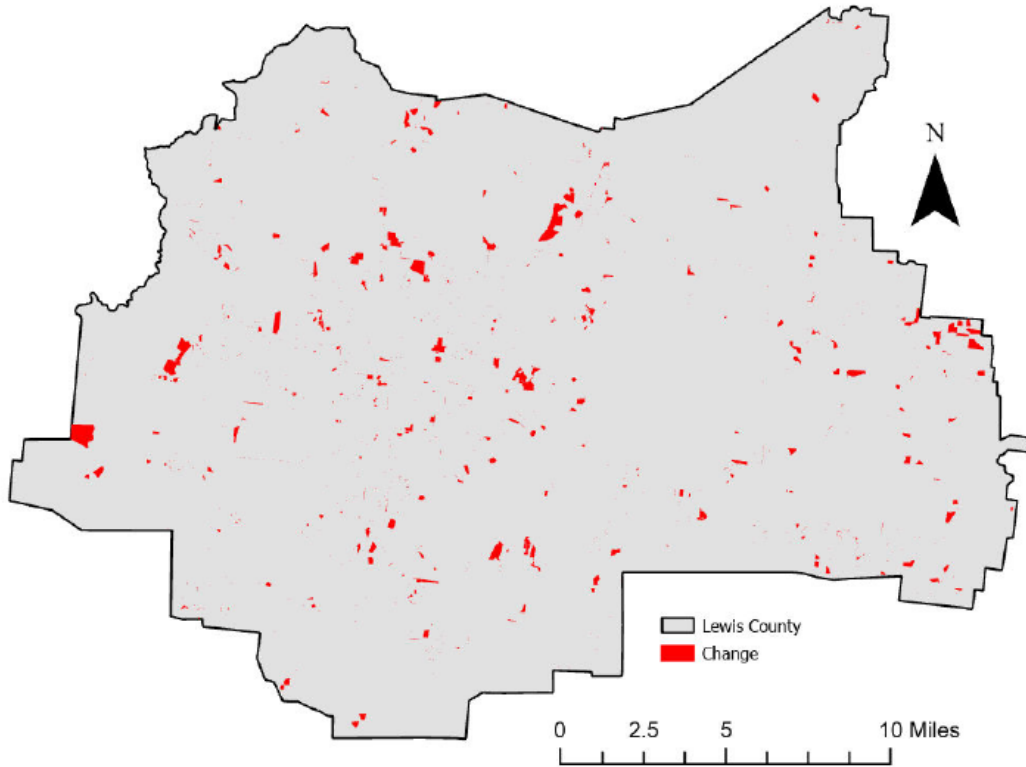


# Lewis County, Tennessee

## Agriculture, Farm, and Forest Land Loss

### 2014-2023

This map displays Lewis County, TN agriculture, farm and forest land parcels converted to alternative land uses from 2014-2023. Parcels converted out of agriculture, farm and forest land are highlighted in red.



Conversion of Lewis County, TN agriculture, farm and forest land to alternative uses (2014-2023)

Type of change	Number of parcels converted	Number of acres converted
Agriculture to Residential	1,053	860.5
Agriculture to Commercial	12	1.0
Agriculture to *Other	59	8.3
Farm to Residential	1,391	1,378.3
Farm to Commercial	15	0.6
Farm to Other	81	32.0
Forest to Residential	569	537.7
Forest to Commercial	14	0.3
Forest to Other	33	52.3
<b>Totals</b>	<b>3,227</b>	<b>2,871</b>

\*Other includes city, county, state, federal, industrial, religious, educational, science, charity, state assessed, or local utility.  
Data source: Tennessee Comptroller of the Treasury and Lewis County Assessor of Property.