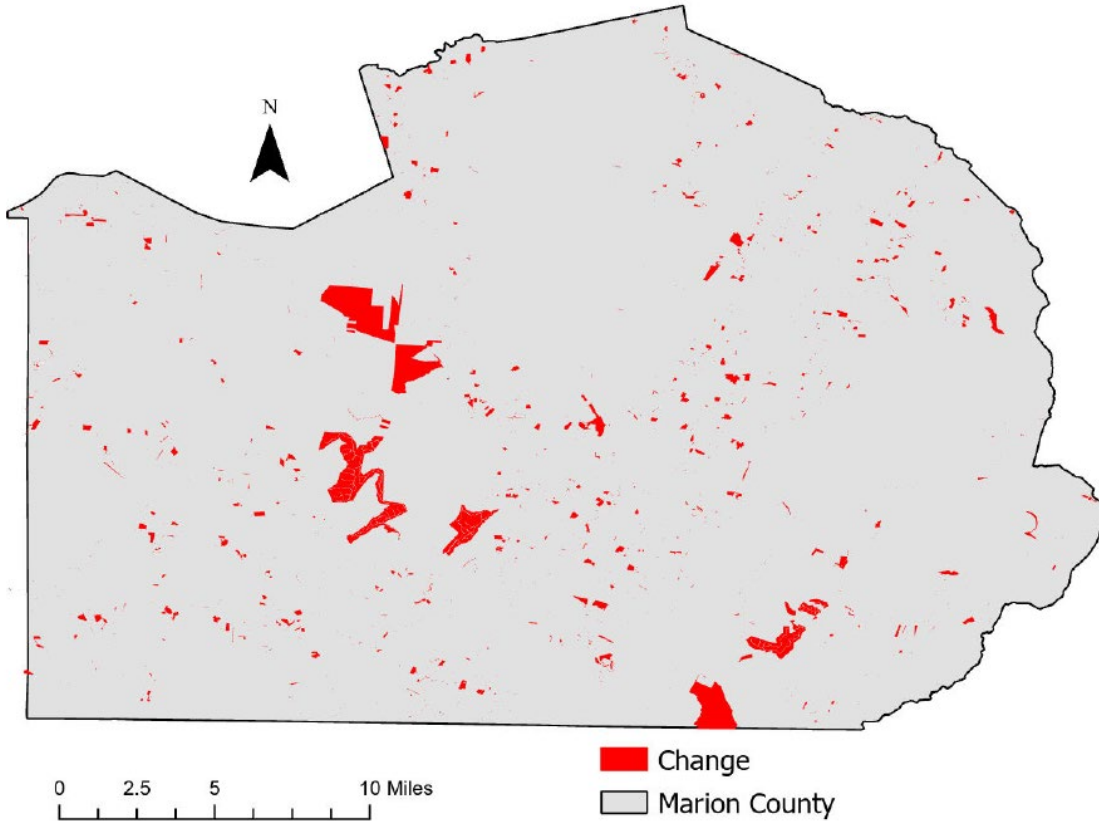


Marion County, Tennessee

Agriculture, Farm, and Forest Land Loss

2015-2023

This map displays Marion County, TN agriculture, farm and forest land parcels converted to alternative land uses from 2015-2023. Parcels converted out of agriculture, farm and forest land are highlighted in red.



Conversion of Marion County, TN agriculture, farm and forest land to alternative uses (2015-2023)

Type of change	Number of parcels converted	Number of acres converted
Agriculture to Residential	1,817	1,083.6
Agriculture to Commercial	98	48.7
Agriculture to *Other	169	250.2
Farm to Residential	4,430	5,309.8
Farm to Commercial	93	235.7
Farm to Other	158	760.3
Forest to Residential	1,097	662.4
Forest to Commercial	20	9.2
Forest to Other	83	1,296.1
Totals	7,965	9,656

*Other includes city, county, state, federal, industrial, religious, educational, science, charity, state assessed, or local utility.

Data source: Tennessee Comptroller of the Treasury and Marion County Assessor of Property.