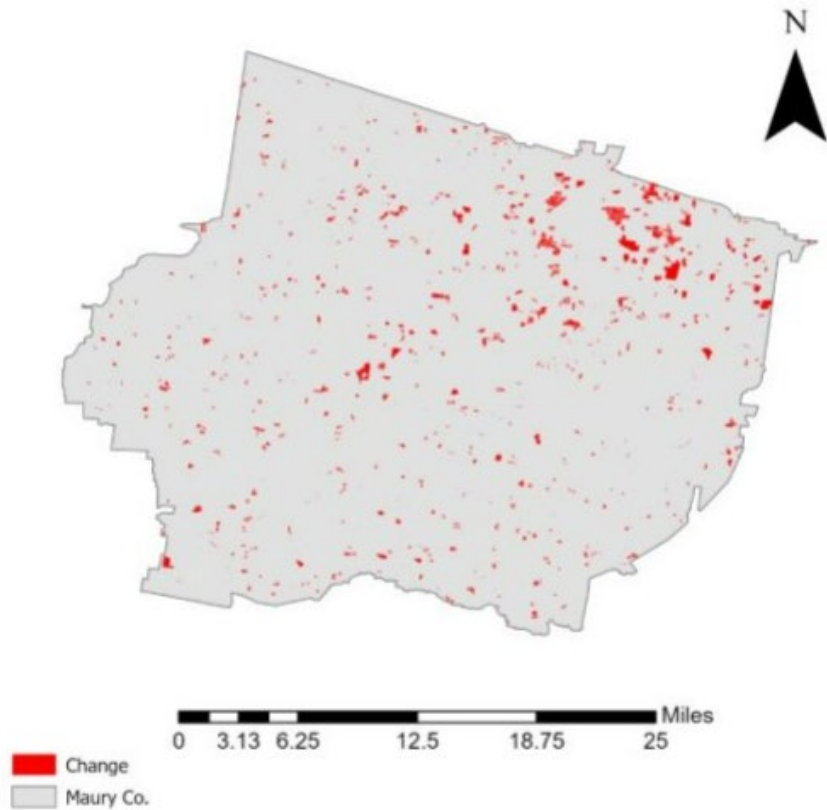


Maury County, Tennessee

Agriculture, Farm, and Forest Land Loss

2014-2023

This map displays Maury County, TN agriculture, farm and forest land parcels converted to alternative land uses from 2014-2023. Parcels converted out of agriculture, farm and forest land are highlighted in red.



Conversion of Maury County, TN agriculture, farm and forest land to alternative uses (2014-2023)

Type of change	Number of parcels converted	Number of acres converted
Agriculture to Residential	10,358	6,656.5
Agriculture to Commercial	330	370.9
Agriculture to *Other	761	691
Farm to Residential	4,753	2,153.4
Farm to Commercial	119	424.1
Farm to Other	222	393.9
Forest to Residential	299	248.1
Forest to Commercial	10	0.33
Forest to Other	35	1.8
Totals	16,887	10,940

*Other includes city, county, state, federal, industrial, religious, educational, science, charity, state assessed, or local utility.

Data source: Tennessee Comptroller of the Treasury and Maury County Assessor of Property.