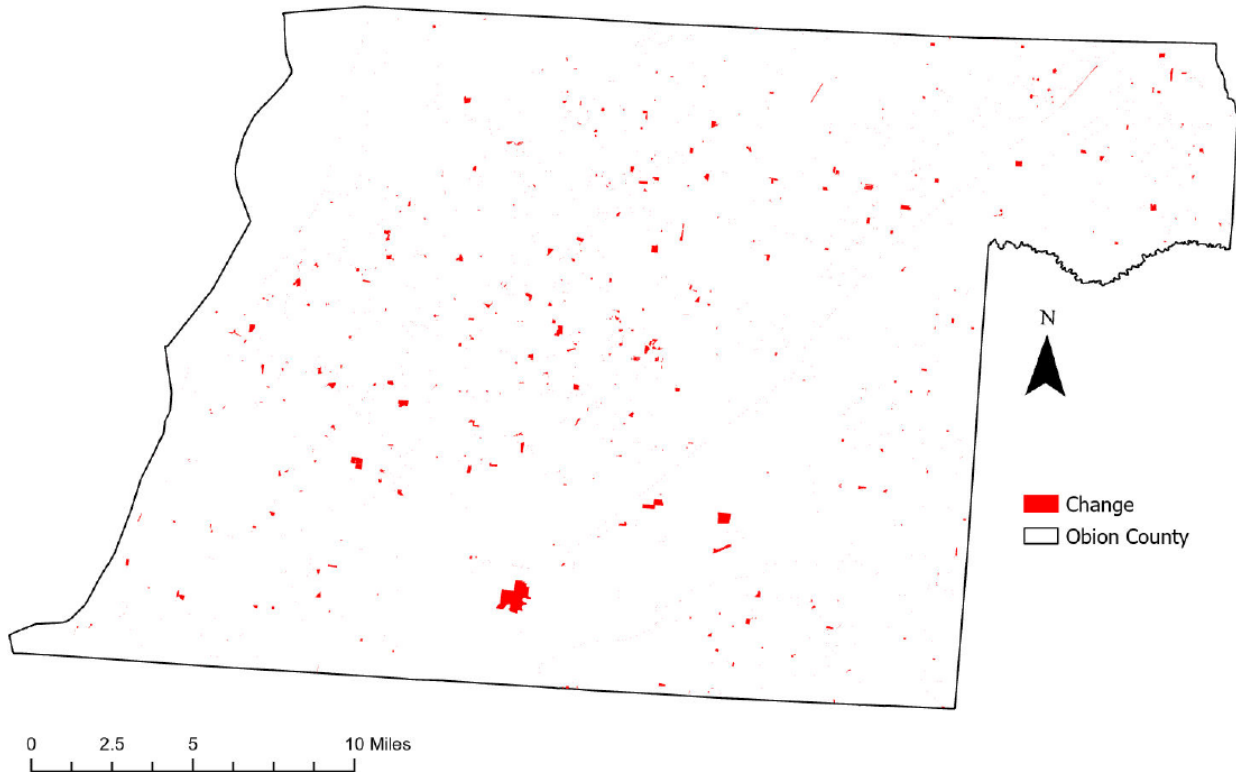


# Obion County, Tennessee

## Agriculture, Farm, and Forest Land Loss

### 2014-2023

This map displays Obion County, TN agriculture, farm and forest land parcels converted to alternative land uses from 2014-2023. Parcels converted out of agriculture, farm and forest land are highlighted in red.



Conversion of Obion County, TN agriculture, farm and forest land to alternative uses (2014-2023)

<b>Type of change</b>	<b>Number of parcels converted</b>	<b>Number of acres converted</b>
Agriculture to Residential	4,290	1,546.0
Agriculture to Commercial	182	56.3
Agriculture to *Other	605	100.8
Farm to Residential	577	343.9
Farm to Commercial	23	6.2
Farm to Other	95	471.0
Forest to Residential	0	0
Forest to Commercial	0	0
Forest to Other	0	0
<b>Totals</b>	<b>5,772</b>	<b>2,524.1</b>

\*Other includes city, county, state, federal, industrial, religious, educational, science, charity, state assessed, or local utility.

Data source: Tennessee Comptroller of the Treasury and Obion County Assessor of Property.