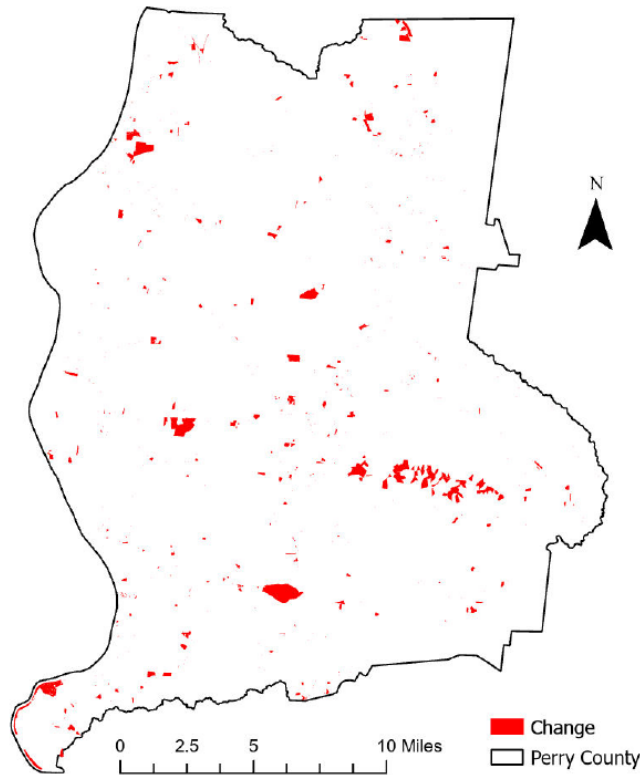


Perry County, Tennessee

Agriculture, Farm, and Forest Land Loss

2014-2023

This map displays Perry County, TN agriculture, farm and forest land parcels converted to alternative land uses from 2014-2023. Parcels converted out of agriculture, farm and forest land are highlighted in red.



Conversion of Perry County, TN agriculture, farm and forest land to alternative uses (2014-2023)

Type of change	Number of parcels converted	Number of acres converted
Agriculture to Residential	1,144	573.3
Agriculture to Commercial	35	111.2
Agriculture to *Other	124	53.1
Farm to Residential	2,122	2,763.8
Farm to Commercial	12	0.2
Farm to Other	116	330.8
Forest to Residential	548	628.0
Forest to Commercial	8	0.2
Forest to Other	55	15.5
Totals	4,164	4,476.1

*Other includes city, county, state, federal, industrial, religious, educational, science, charity, state assessed, or local utility.
Data source: Tennessee Comptroller of the Treasury and Perry County Assessor of Property.