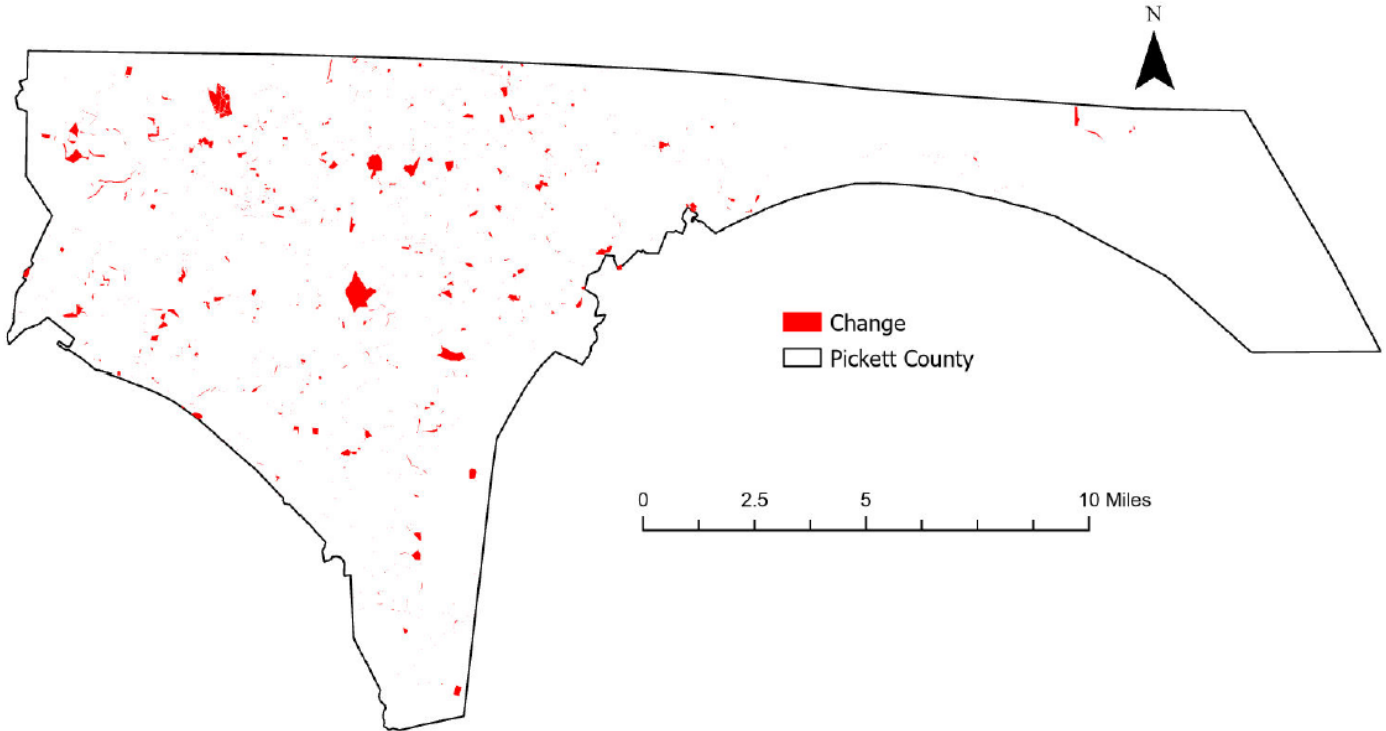


# Pickett County, Tennessee

## Agriculture, Farm, and Forest Land Loss

### 2015-2023

This map displays Pickett County, TN agriculture, farm and forest land parcels converted to alternative land uses from 2015-2023. Parcels converted out of agriculture, farm and forest land are highlighted in red.



Conversion of Pickett County, TN agriculture, farm and forest land to alternative uses (2015-2023)

Type of change	Number of parcels converted	Number of acres converted
Agriculture to Residential	1,809	971.8
Agriculture to Commercial	39	17.6
Agriculture to *Other	1,306	859.7
Farm to Residential	340	247.4
Farm to Commercial	17	192.2
Farm to Other	565	407.0
Forest to Residential	0	0
Forest to Commercial	0	0
Forest to Other	1,809	971.8
<b>Totals</b>	<b>4,085</b>	<b>2,695.9</b>

\*Other includes city, county, state, federal, industrial, religious, educational, science, charity, state assessed, or local utility.  
Data source: Tennessee Comptroller of the Treasury and Pickett County Assessor of Property.