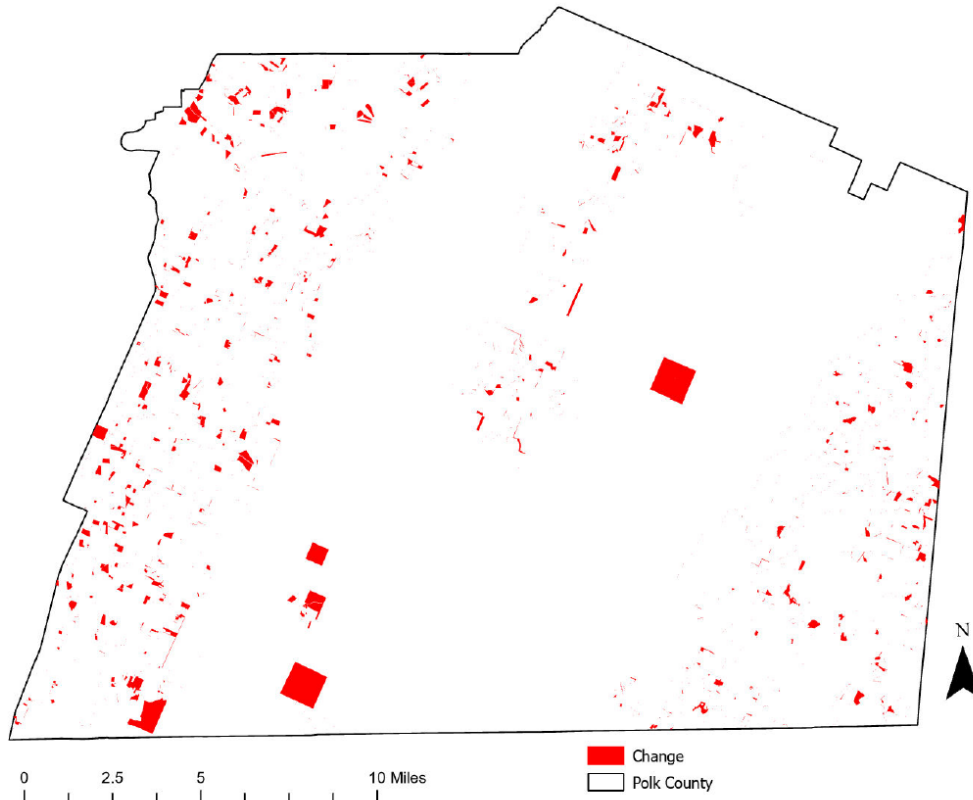


# Polk County, Tennessee

## Agriculture, Farm, and Forest Land Loss

### 2014-2023

This map displays Polk County, TN agriculture, farm and forest land parcels converted to alternative land uses from 2014-2023. Parcels converted out of agriculture, farm and forest land are highlighted in red.



Conversion of Polk County, TN agriculture, farm and forest land to alternative uses (2014-2023)

Type of change	Number of parcels converted	Number of acres converted
Agriculture to Residential	2,197	1,562.3
Agriculture to Commercial	94	9.6
Agriculture to *Other	663	3,009.0
Farm to Residential	1,799	1,495.1
Farm to Commercial	97	112.1
Farm to Other	762	2,357.6
Forest to Residential	541	485.6
Forest to Commercial	38	4.7
Forest to Other	298	423.3
<b>Totals</b>	<b>6,489</b>	<b>9,459.3</b>

\*Other includes city, county, state, federal, industrial, religious, educational, science, charity, state assessed, or local utility.  
Data source: Tennessee Comptroller of the Treasury and Polk County Assessor of Property.