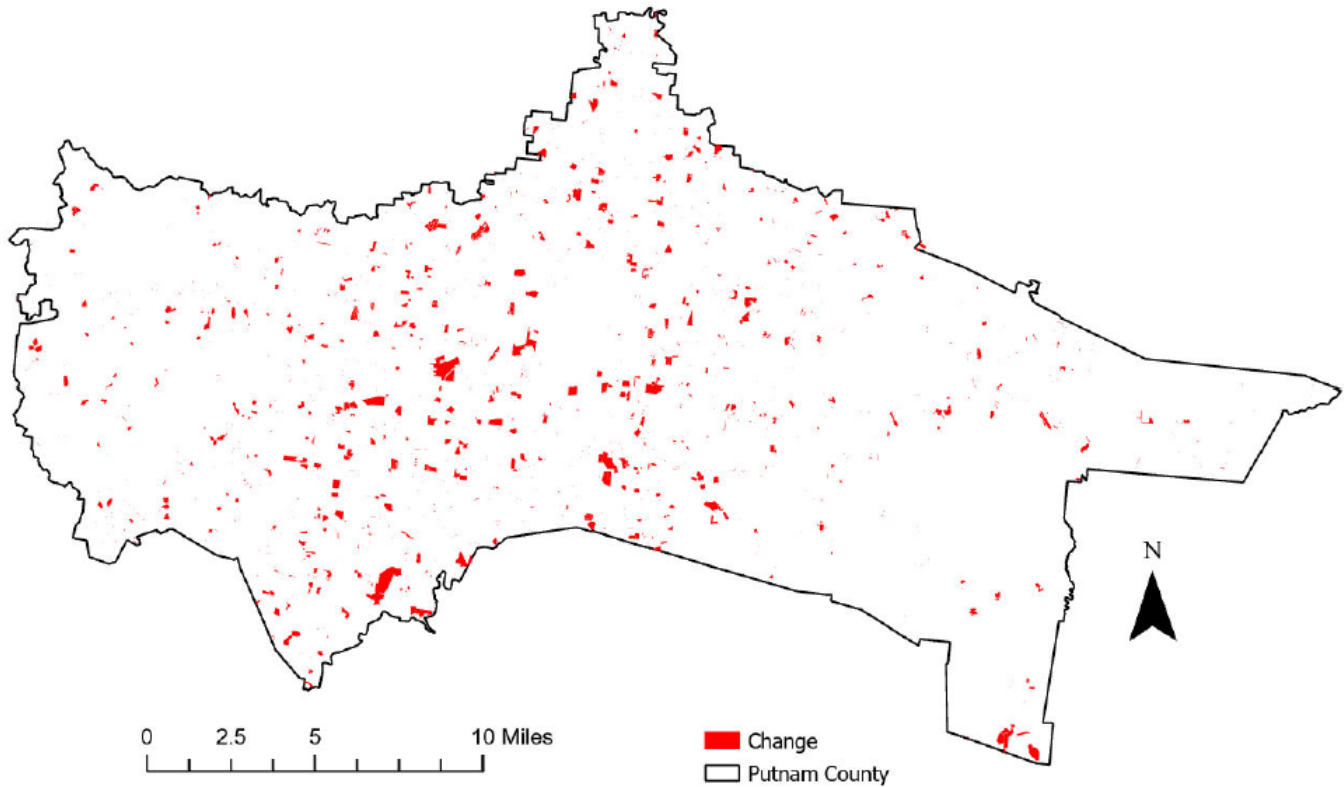


Putnam County, Tennessee

Agriculture, Farm, and Forest Land Loss

2014-2023

This map displays Putnam County, TN agriculture, farm and forest land parcels converted to alternative land uses from 2014-2023. Parcels converted out of agriculture, farm and forest land are highlighted in red.



Conversion of Putnam County, TN agriculture, farm and forest land to alternative uses (2014-2023)

Type of change	Number of parcels converted	Number of acres converted
Agriculture to Residential	7,292	4,235.0
Agriculture to Commercial	226	183.4
Agriculture to *Other	483	1,488.7
Farm to Residential	1,036	555.4
Farm to Commercial	52	234.9
Farm to Other	60	152.0
Forest to Residential	0	0
Forest to Commercial	0	0
Forest to Other	0	0
Totals	9,149	6,849.5

*Other includes city, county, state, federal, industrial, religious, educational, science, charity, state assessed, or local utility.
Data source: Tennessee Comptroller of the Treasury and Putnam County Assessor of Property.