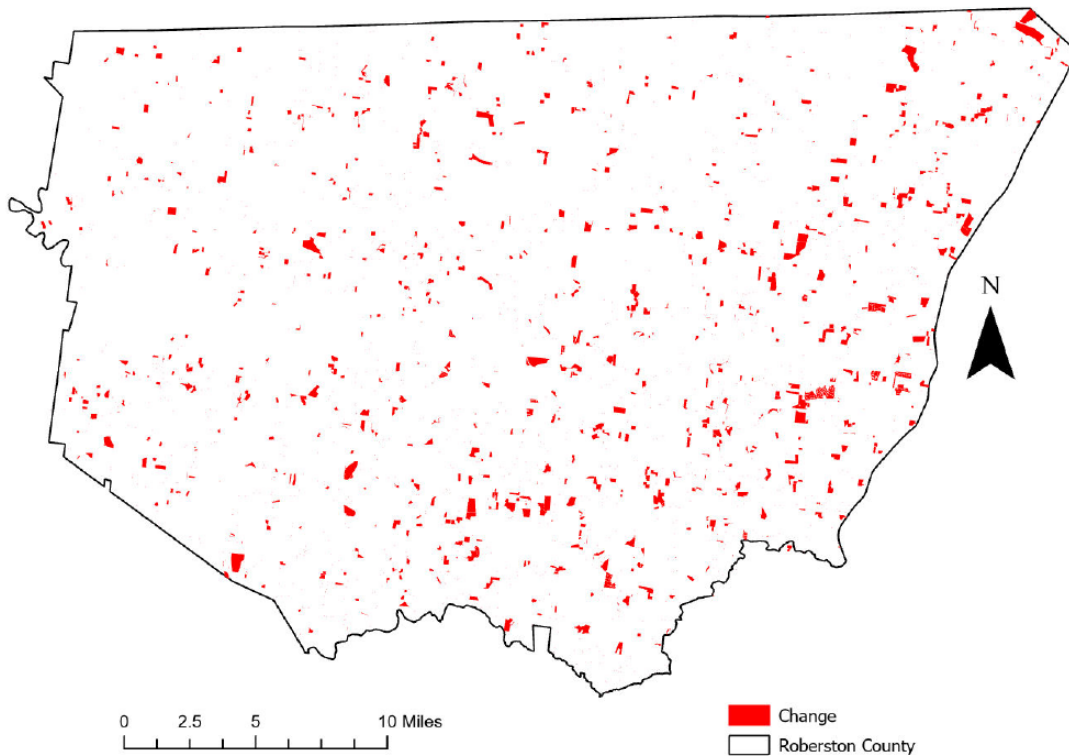


Robertson County, Tennessee

Agriculture, Farm, and Forest Land Loss

2014-2023

This map displays Robertson County, TN agriculture, farm and forest land parcels converted to alternative land uses from 2014-2023. Parcels converted out of agriculture, farm and forest land are highlighted in red.



Conversion of Robertson County, TN agriculture, farm and forest land to alternative uses (2014-2023)

Type of change	Number of parcels converted	Number of acres converted
Agriculture to Residential	10,094	7,517.2
Agriculture to Commercial	223	131.6
Agriculture to *Other	496	694.9
Farm to Residential	988	676.9
Farm to Commercial	15	3.3
Farm to Other	34	229.2
Forest to Residential	451	165.0
Forest to Commercial	13	10.6
Forest to Other	12	69.4
Totals	12,326	9,498.2

*Other includes city, county, state, federal, industrial, religious, educational, science, charity, state assessed, or local utility.
 Data source: Tennessee Comptroller of the Treasury and Robertson County Assessor of Property.