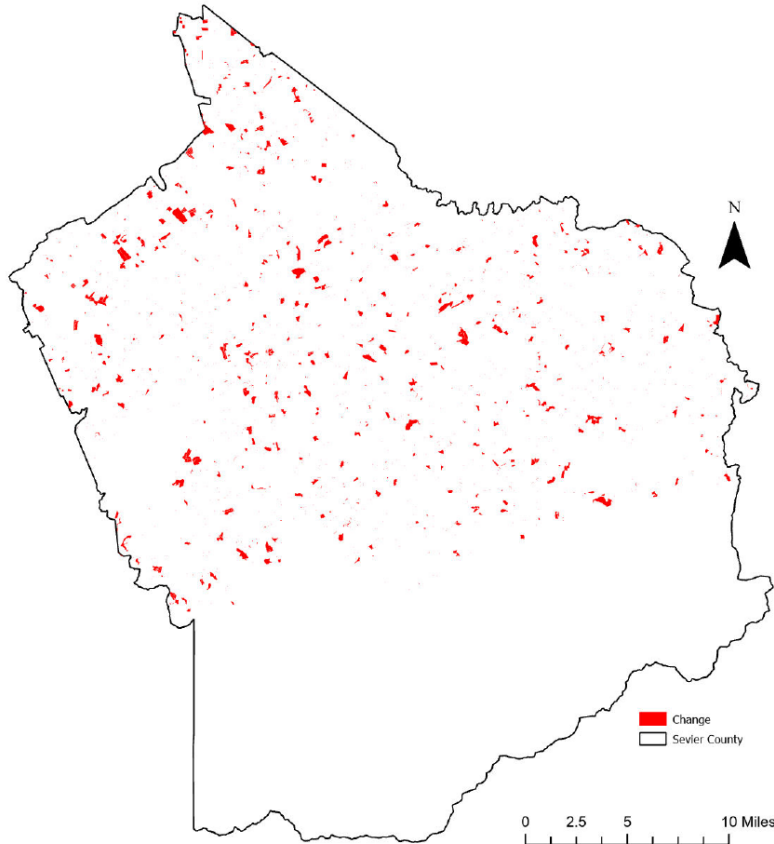


Sevier County, Tennessee

Agriculture, Farm, and Forest Land Loss

2014-2023

This map displays Sevier County, TN agriculture, farm and forest land parcels converted to alternative land uses from 2014-2023. Parcels converted out of agriculture, farm and forest land are highlighted in red.



Conversion of Sevier County, TN agriculture, farm and forest land to alternative uses (2014-2023)

Type of change	Number of parcels converted	Number of acres converted
Agriculture to Residential	8,423	3,845.7
Agriculture to Commercial	802	161.5
Agriculture to *Other	516	190.0
Farm to Residential	3,037	1,859.8
Farm to Commercial	384	73.9
Farm to Other	210	883.5
Forest to Residential	1,125	290.0
Forest to Commercial	170	233.0
Forest to Other	105	73.7
Totals	14,772	7,611.2

*Other includes city, county, state, federal, industrial, religious, educational, science, charity, state assessed, or local utility.
Data source: Tennessee Comptroller of the Treasury and Sevier County Assessor of Property.