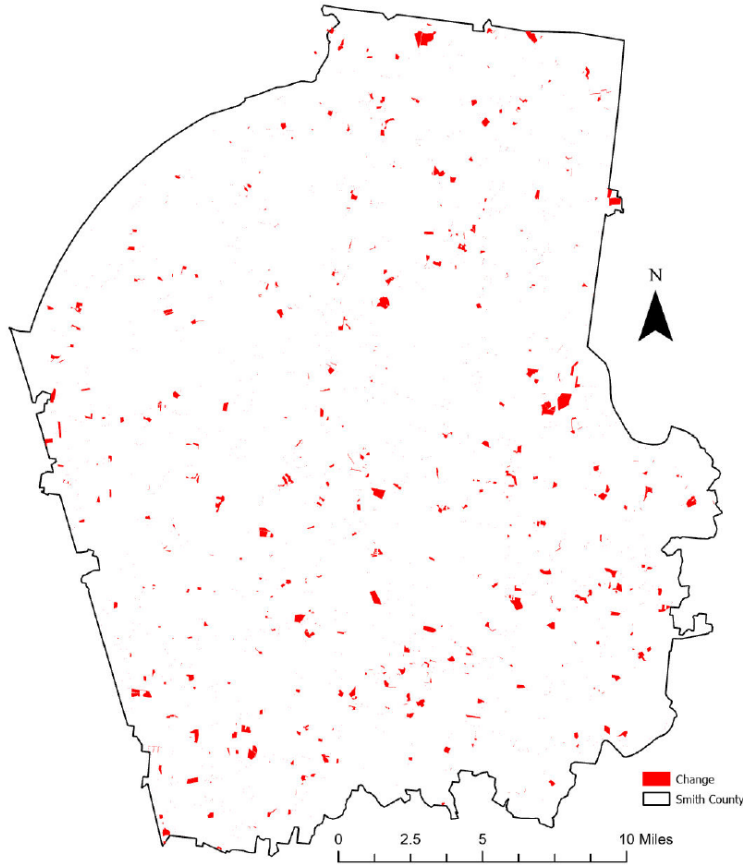


Smith County, Tennessee

Agriculture, Farm, and Forest Land Loss

2015-2023

This map displays Smith County, TN agriculture, farm and forest land parcels converted to alternative land uses from 2015-2023. Parcels converted out of agriculture, farm and forest land are highlighted in red.



Conversion of Smith County, TN agriculture, farm and forest land to alternative uses (2015-2023)

Type of change	Number of parcels converted	Number of acres converted
Agriculture to Residential	3,792	2,457.6
Agriculture to Commercial	64	12.7
Agriculture to *Other	498	101.3
Farm to Residential	1,080	767.7
Farm to Commercial	10	0.3
Farm to Other	209	69.5
Forest to Residential	5	4.2
Forest to Commercial	0	0
Forest to Other	0	0
Totals	5,658	3,413.3

*Other includes city, county, state, federal, industrial, religious, educational, science, charity, state assessed, or local utility.

Data source: Tennessee Comptroller of the Treasury and Smith County Assessor of Property.