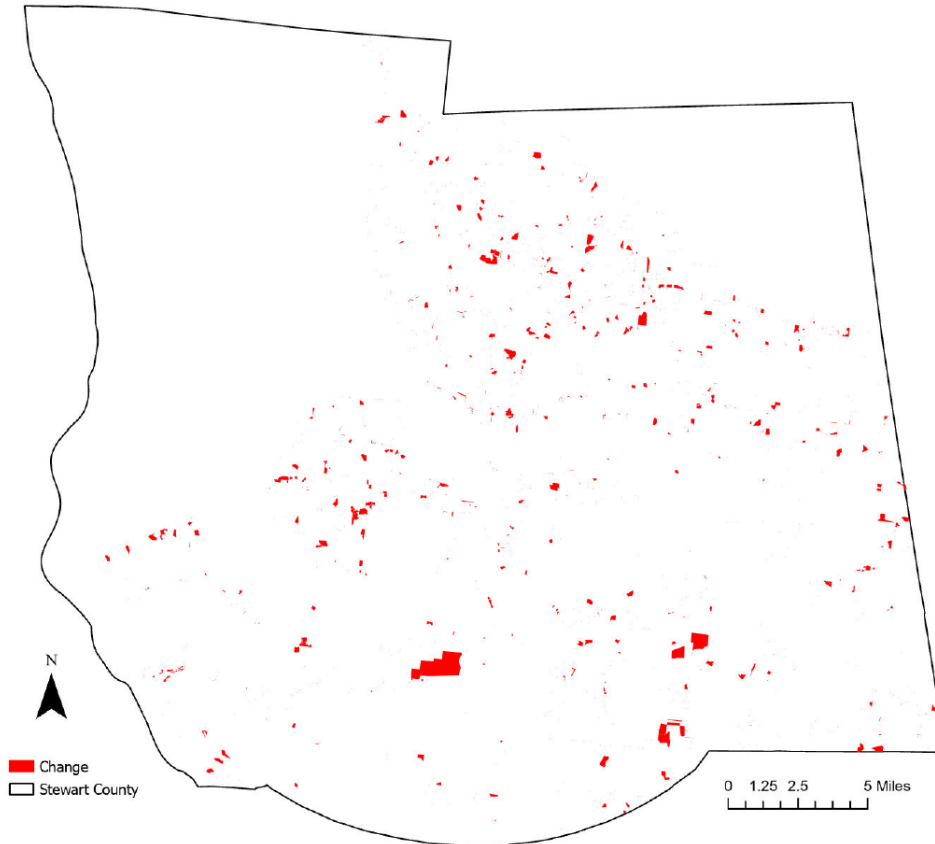


Stewart County, Tennessee

Agriculture, Farm, and Forest Land Loss

2014-2023

This map displays Stewart County, TN agriculture, farm and forest land parcels converted to alternative land uses from 2014-2023. Parcels converted out of agriculture, farm and forest land are highlighted in red.



Conversion of Stewart County, TN agriculture, farm and forest land to alternative uses (2014-2023)

Type of change	Number of parcels converted	Number of acres converted
Agriculture to Residential	2,313	1,221.3
Agriculture to Commercial	84	192.3
Agriculture to *Other	336	205.4
Farm to Residential	766	1,014.0
Farm to Commercial	16	6.3
Farm to Other	111	34.9
Forest to Residential	738	415.6
Forest to Commercial	21	1.3
Forest to Other	71	73.0
Totals	4,456	3,163.8

*Other includes city, county, state, federal, industrial, religious, educational, science, charity, state assessed, or local utility.
Data source: Tennessee Comptroller of the Treasury and Stewart County Assessor of Property.