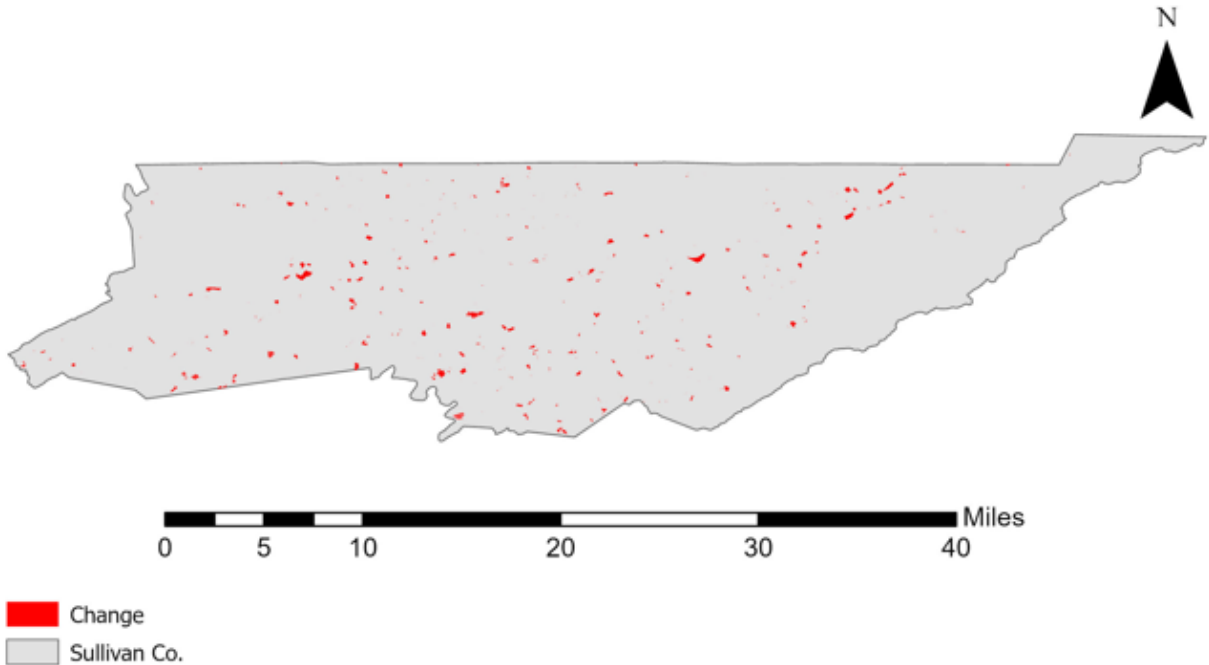


# Sullivan County, Tennessee

## Agriculture, Farm and Forest Land Loss

### 2019-2023

This map displays Sullivan County, TN agriculture, farm and forest land parcels converted to alternative land uses from 2019-2023. Parcels converted out of agriculture, farm and forest land are highlighted in red.



Conversion of Sullivan County, TN agriculture, farm and forest land to alternative uses (2019-2023)

Type of change	Number of parcels converted	Number of acres converted
Agriculture to Residential	996	1,801.1
Agriculture to Commercial	15	9.6
Agriculture to *Other	21	190.1
Farm to Residential	259	364.1
Farm to Commercial	21	41.2
Farm to Other	11	105.7
Forest to Residential	73	79.4
Forest to Other	5	2.5
<b>Totals</b>	<b>1,401</b>	<b>2,593.7</b>

\*Other includes city, county, federal, state, industrial, religious, educational, science, charity, local utility, or state assessed.

Data source: Tennessee Comptroller of the Treasury and Sullivan County Assessor of Property.