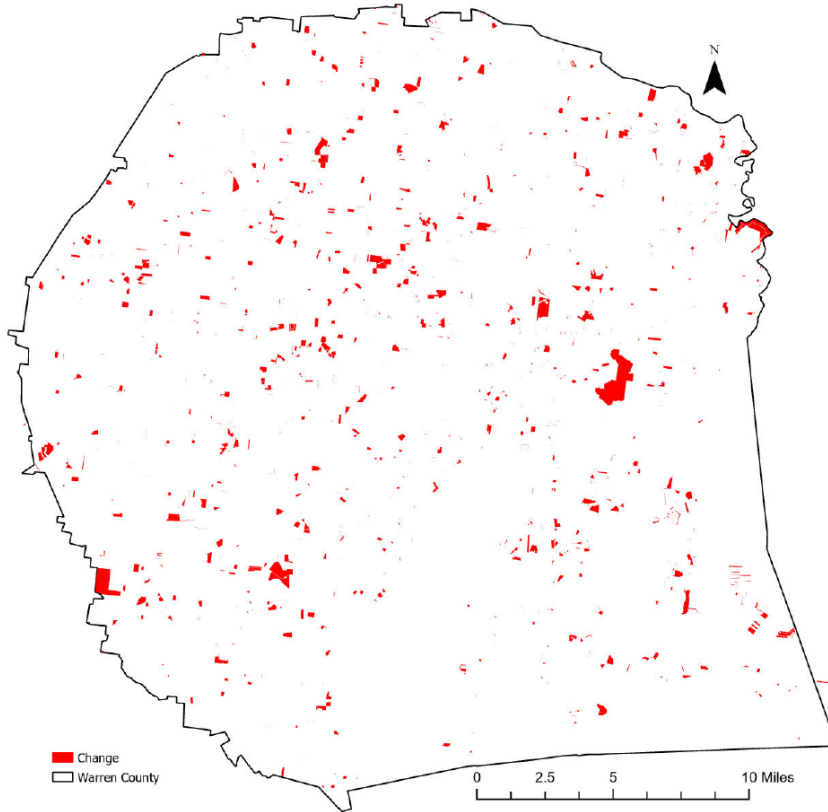


Warren County, Tennessee

Agriculture, Farm, and Forest Land Loss

2014-2023

This map displays Warren County, TN agriculture, farm and forest land parcels converted to alternative land uses from 2014-2023. Parcels converted out of agriculture, farm and forest land are highlighted in red.



Conversion of Warren County, TN agriculture, farm and forest land to alternative uses (2014-2023)

Type of change	Number of parcels converted	Number of acres converted
Agriculture to Residential	1,848	3,819.8
Agriculture to Commercial	57	75.3
Agriculture to *Other	69	971.7
Farm to Residential	523	1,028.3
Farm to Commercial	5	32.0
Farm to Other	14	20.8
Forest to Residential	0	0
Forest to Commercial	0	0
Forest to Other	0	0
Totals	2,516	5,947.9

*Other includes city, county, state, federal, industrial, religious, educational, science, charity, state assessed, or local utility.

Data source: Tennessee Comptroller of the Treasury and Warren County Assessor of Property.