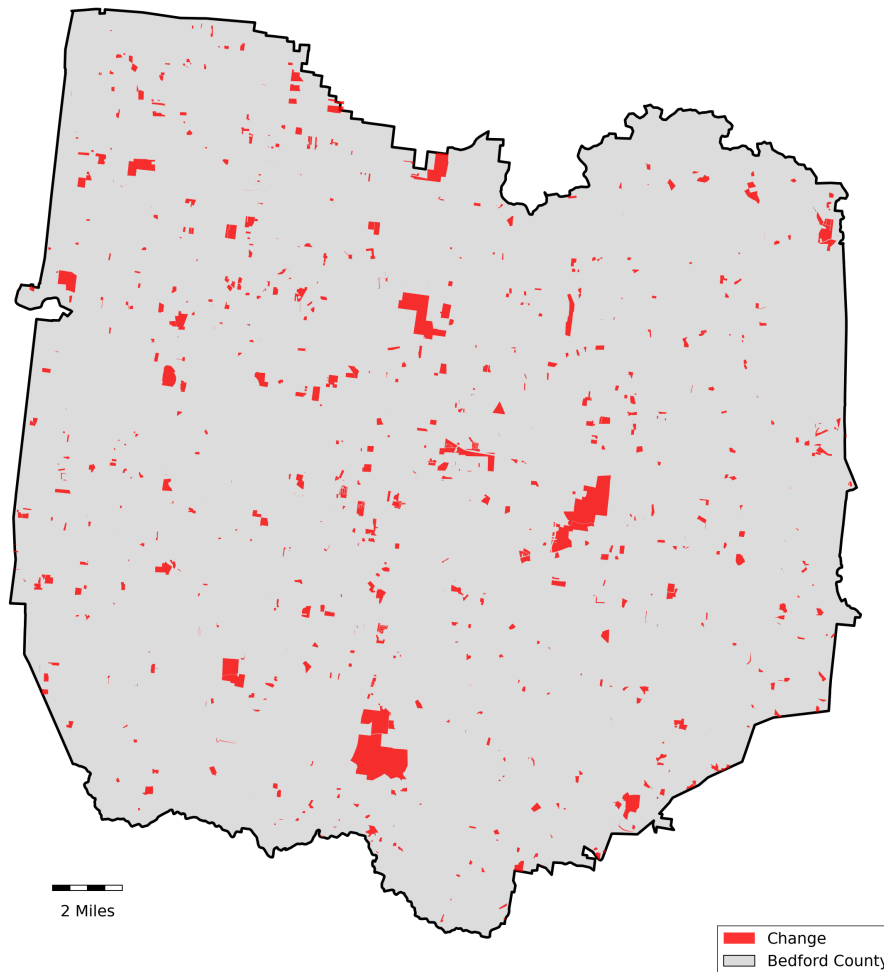


Bedford County, Tennessee

Agriculture, Farm, and Forest Land Loss

2015-2024

This map displays Bedford County, TN agriculture, farm and forest land parcels converted to alternative land uses from 2015-2024. Parcels converted out of agriculture, farm and forest land are highlighted in red.



Conversion of Bedford County, TN agriculture, farm and forest land to alternative uses (2015-2024)

| Type of change | Number of parcels converted | Number of acres converted |
|----------------------------|-----------------------------|---------------------------|
| Agriculture to Residential | 118 | 6,006 |
| Agriculture to Commercial | 22 | 2,559 |
| Agriculture to *Other | 6 | 605 |
| Farm to Residential | 29 | 758 |
| Farm to Commercial | 1 | 21 |
| Farm to *Other | 2 | 36 |
| Forest to Residential | 0 | 0 |
| Forest to Commercial | 0 | 0 |
| Forest to *Other | 0 | 0 |
| Totals | 283 | 9,985 |

*Other includes city, county, state, federal, industrial, religious, educational, science, charity, state assessed, or local utility. Data source: Tennessee Comptroller of the Treasury and Bedford County Assessor of Property.