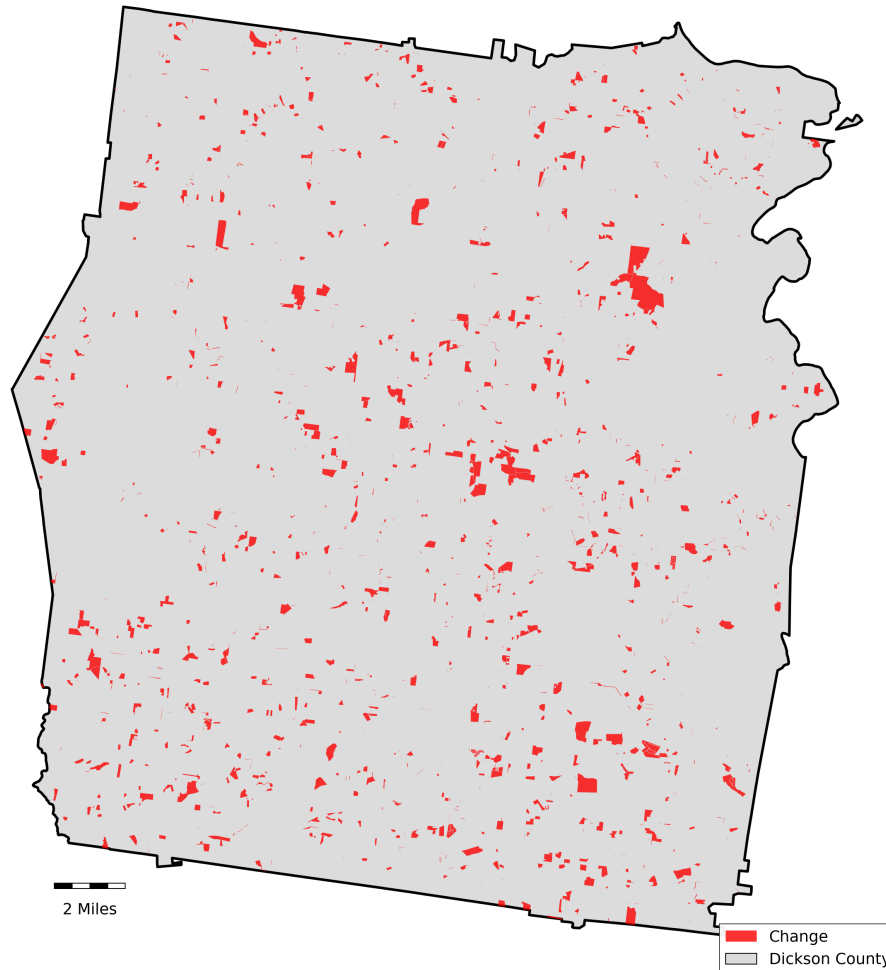


Dickson County, Tennessee

Agriculture, Farm, and Forest Land Loss

2015-2024

This map displays Dickson County, TN agriculture, farm and forest land parcels converted to alternative land uses from 2015-2024. Parcels converted out of agriculture, farm and forest land are highlighted in red.



Conversion of Dickson County, TN agriculture, farm and forest land to alternative uses (2015-2024)

Type of change	Number of parcels converted	Number of acres converted
Agriculture to Residential	131	5,443
Agriculture to Commercial	9	1,253
Agriculture to *Other	2	367
Farm to Residential	68	2,060
Farm to Commercial	3	73
Farm to *Other	4	130
Forest to Residential	20	821
Forest to Commercial	1	73
Forest to *Other	0	1
Totals	334	10,222

*Other includes city, county, state, federal, industrial, religious, educational, science, charity, state assessed, or local utility. Data source: Tennessee Comptroller of the Treasury and Dickson County Assessor of Property.