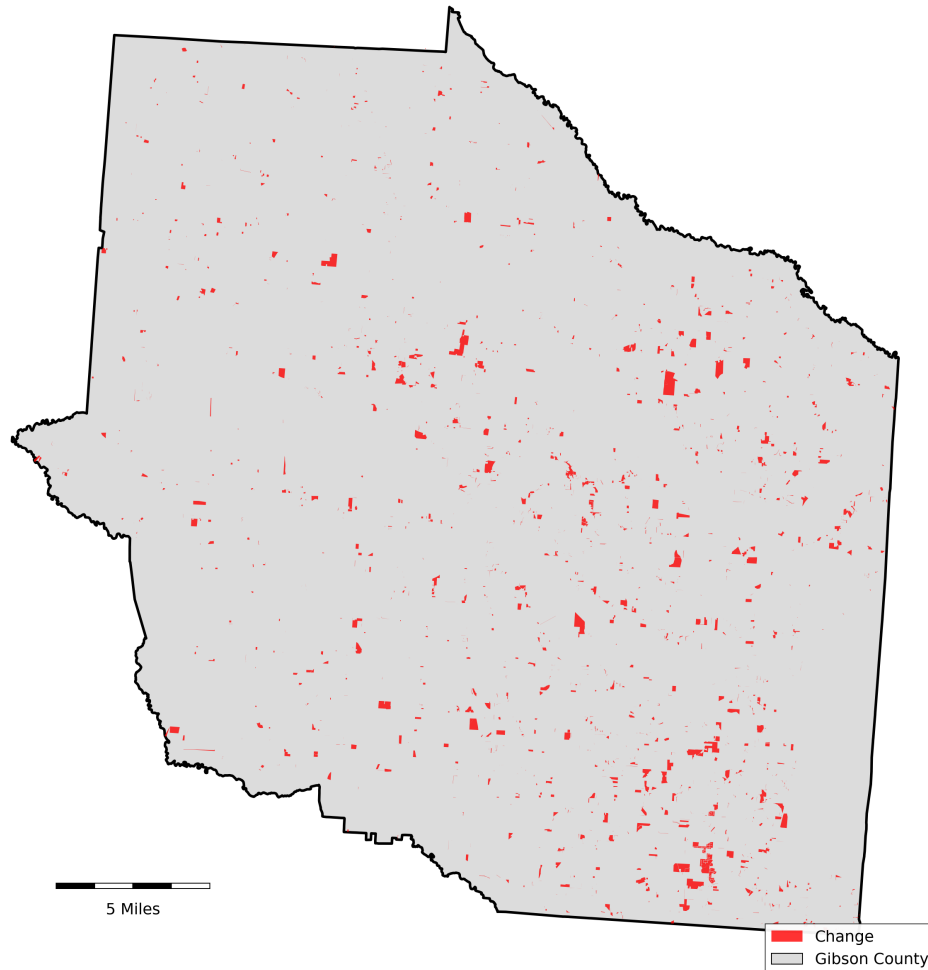


# Gibson County, Tennessee

## Agriculture, Farm, and Forest Land Loss

### 2015-2024

This map displays Gibson County, TN agriculture, farm and forest land parcels converted to alternative land uses from 2015-2024. Parcels converted out of agriculture, farm and forest land are highlighted in red.



Conversion of Gibson County, TN agriculture, farm and forest land to alternative uses (2015-2024)

Type of change	Number of parcels converted	Number of acres converted
Agriculture to Residential	164	4,670
Agriculture to Commercial	11	664
Agriculture to *Other	7	484
Farm to Residential	13	300
Farm to Commercial	1	2
Farm to *Other	0	0
Forest to Residential	0	0
Forest to Commercial	0	0
Forest to *Other	0	0
<b>Totals</b>	<b>276</b>	<b>6,120</b>

\*Other includes city, county, state, federal, industrial, religious, educational, science, charity, state assessed, or local utility. Data source: Tennessee Comptroller of the Treasury and Gibson County Assessor of Property.