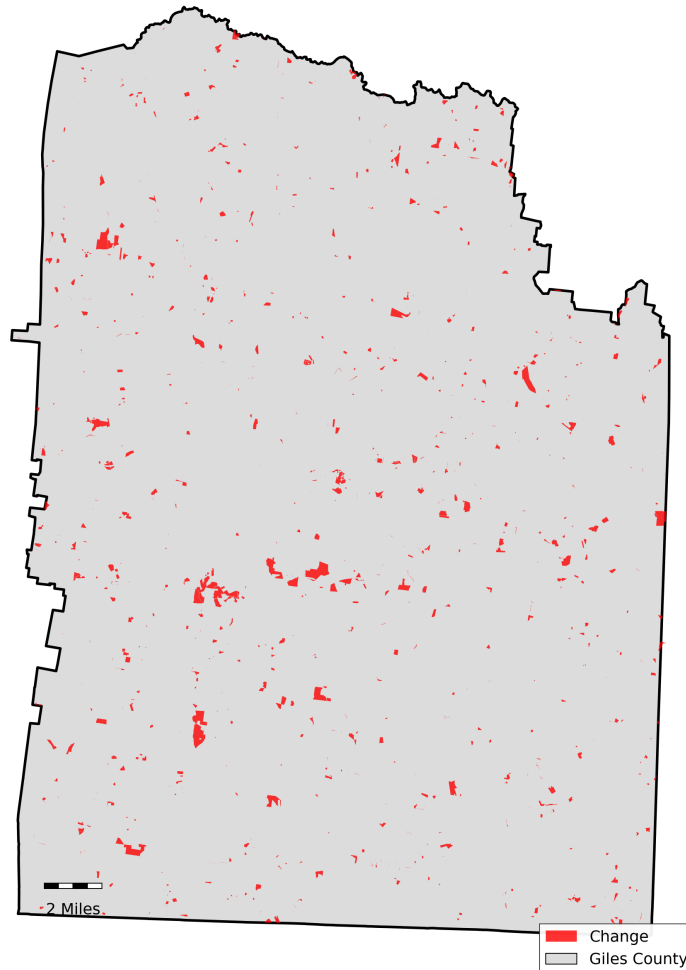


Giles County, Tennessee

Agriculture, Farm, and Forest Land Loss

2015-2024

This map displays Giles County, TN agriculture, farm and forest land parcels converted to alternative land uses from 2015-2024. Parcels converted out of agriculture, farm and forest land are highlighted in red.



Conversion of Giles County, TN agriculture, farm and forest land to alternative uses (2015-2024)

Type of change	Number of parcels converted	Number of acres converted
Agriculture to Residential	115	4,057
Agriculture to Commercial	8	737
Agriculture to *Other	3	324
Farm to Residential	18	486
Farm to Commercial	2	60
Farm to *Other	0	6
Forest to Residential	3	56
Forest to Commercial	0	1
Forest to *Other	0	1
Totals	220	5,728

*Other includes city, county, state, federal, industrial, religious, educational, science, charity, state assessed, or local utility. Data source: Tennessee Comptroller of the Treasury and Giles County Assessor of Property.