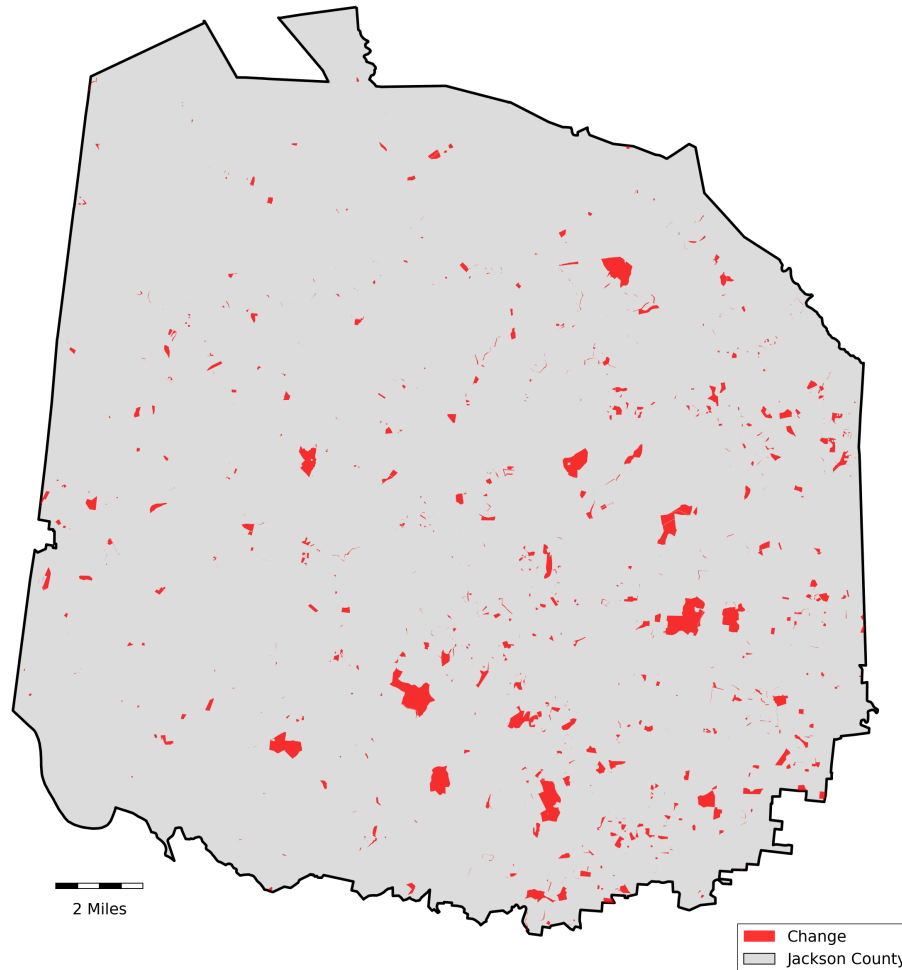


Jackson County, Tennessee

Agriculture, Farm, and Forest Land Loss

2015-2024

This map displays Jackson County, TN agriculture, farm and forest land parcels converted to alternative land uses from 2015-2024. Parcels converted out of agriculture, farm and forest land are highlighted in red.



Conversion of Jackson County, TN agriculture, farm and forest land to alternative uses (2015-2024)

Type of change	Number of parcels converted	Number of acres converted
Agriculture to Residential	94	3,074
Agriculture to Commercial	9	619
Agriculture to *Other	5	640
Farm to Residential	15	296
Farm to Commercial	0	7
Farm to *Other	0	26
Forest to Residential	0	0
Forest to Commercial	0	0
Forest to *Other	0	0
Totals	146	4,662

*Other includes city, county, state, federal, industrial, religious, educational, science, charity, state assessed, or local utility. Data source: Tennessee Comptroller of the Treasury and Jackson County Assessor of Property.