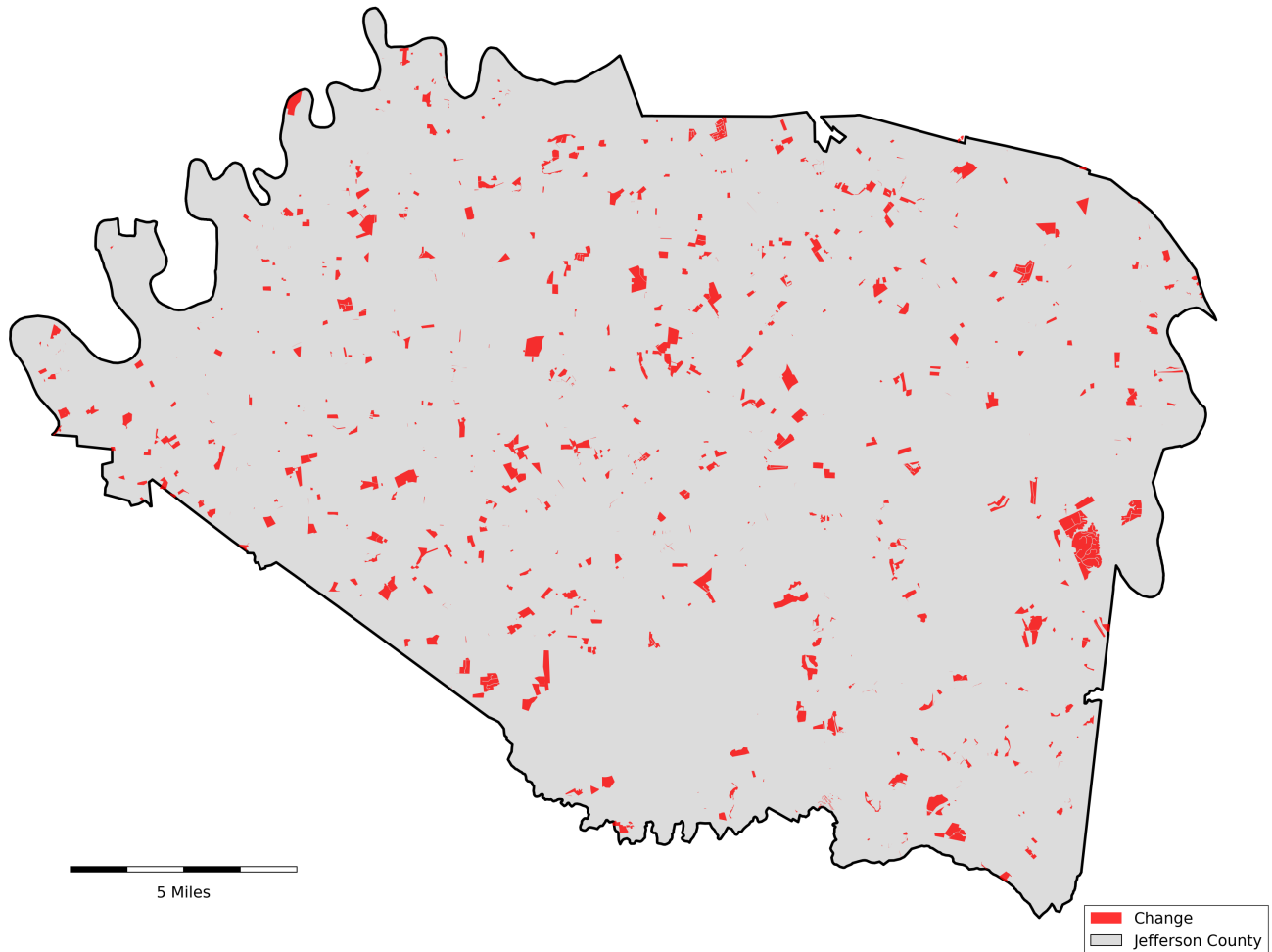


Jefferson County, Tennessee

Agriculture, Farm, and Forest Land Loss

2015-2024

This map displays Jefferson County, TN agriculture, farm and forest land parcels converted to alternative land uses from 2015-2024. Parcels converted out of agriculture, farm and forest land are highlighted in red.



Conversion of Jefferson County, TN agriculture, farm and forest land to alternative uses (2015-2024)

Type of change	Number of parcels converted	Number of acres converted
Agriculture to Residential	149	4,638
Agriculture to Commercial	2	133
Agriculture to *Other	6	275
Farm to Residential	43	1,483
Farm to Commercial	2	47
Farm to *Other	1	19
Forest to Residential	4	202
Forest to Commercial	1	83
Forest to *Other	0	6
Totals	471	6,885

*Other includes city, county, state, federal, industrial, religious, educational, science, charity, state assessed, or local utility. Data source: Tennessee Comptroller of the Treasury and Jefferson County Assessor of Property.