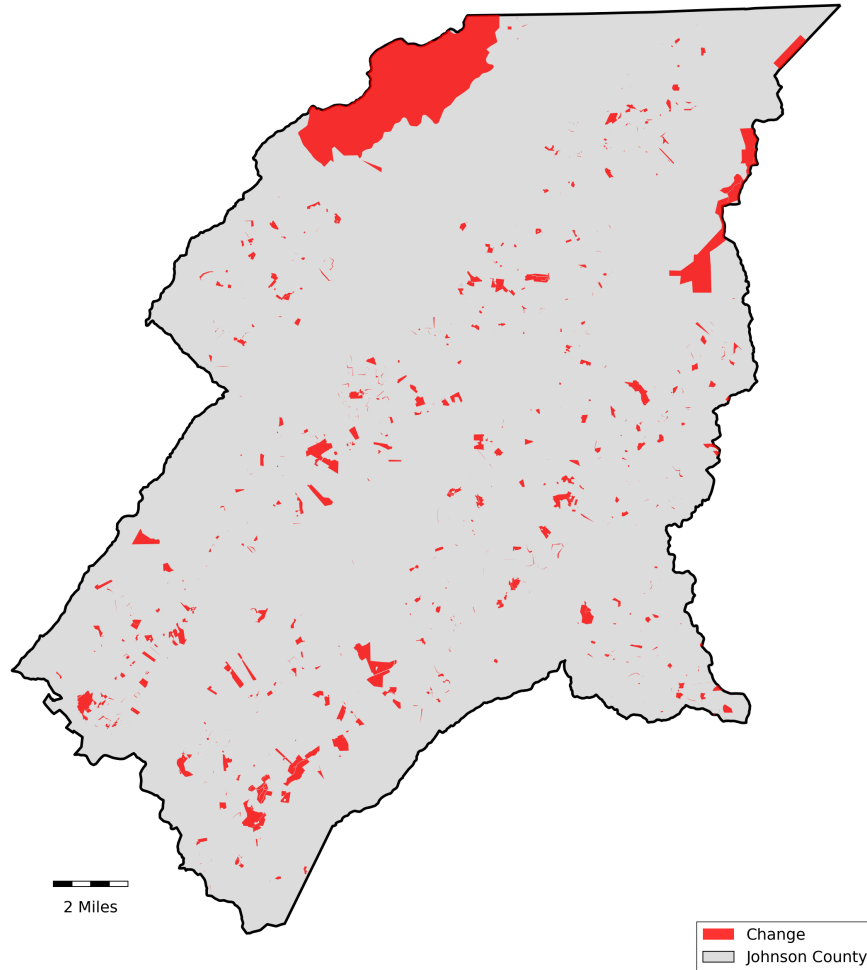


Johnson County, Tennessee

Agriculture, Farm, and Forest Land Loss

2015-2024

This map displays Johnson County, TN agriculture, farm and forest land parcels converted to alternative land uses from 2015-2024. Parcels converted out of agriculture, farm and forest land are highlighted in red.



Conversion of Johnson County, TN agriculture, farm and forest land to alternative uses (2015-2024)

Type of change	Number of parcels converted	Number of acres converted
Agriculture to Residential	113	3,459
Agriculture to Commercial	3	338
Agriculture to *Other	5	7,116
Farm to Residential	12	530
Farm to Commercial	0	10
Farm to *Other	1	121
Forest to Residential	0	0
Forest to Commercial	0	0
Forest to *Other	0	0
Totals	248	11,573

*Other includes city, county, state, federal, industrial, religious, educational, science, charity, state assessed, or local utility. Data source: Tennessee Comptroller of the Treasury and Johnson County Assessor of Property.