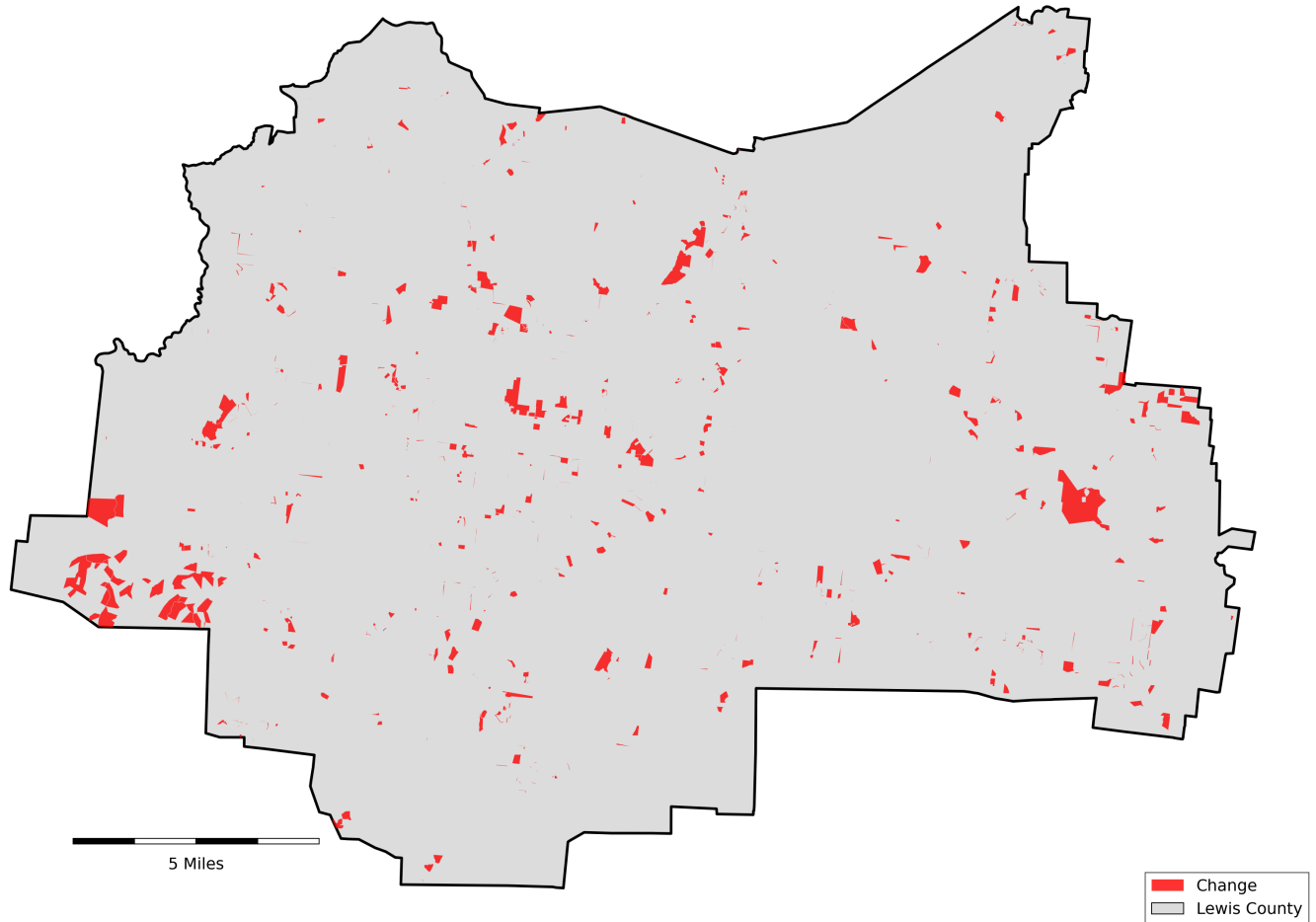


Lewis County, Tennessee

Agriculture, Farm, and Forest Land Loss

2015-2024

This map displays Lewis County, TN agriculture, farm and forest land parcels converted to alternative land uses from 2015-2024. Parcels converted out of agriculture, farm and forest land are highlighted in red.



Conversion of Lewis County, TN agriculture, farm and forest land to alternative uses (2015-2024)

Type of change	Number of parcels converted	Number of acres converted
Agriculture to Residential	22	939
Agriculture to Commercial	1	26
Agriculture to *Other	1	26
Farm to Residential	42	2,219
Farm to Commercial	1	363
Farm to *Other	0	31
Forest to Residential	14	624
Forest to Commercial	0	25
Forest to *Other	2	86
Totals	87	4,338

*Other includes city, county, state, federal, industrial, religious, educational, science, charity, state assessed, or local utility. Data source: Tennessee Comptroller of the Treasury and Lewis County Assessor of Property.