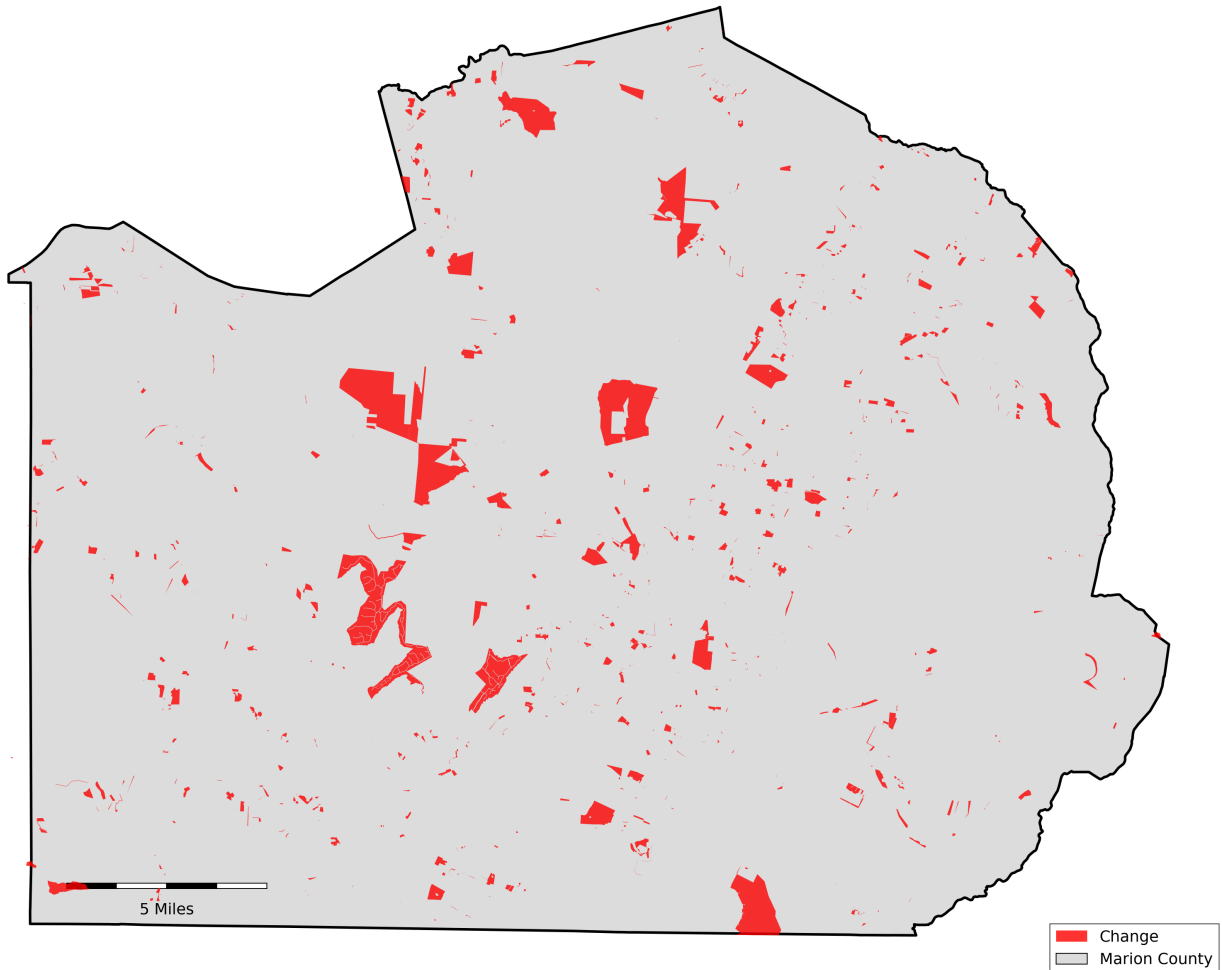


Marion County, Tennessee

Agriculture, Farm, and Forest Land Loss

2015-2024

This map displays Marion County, TN agriculture, farm and forest land parcels converted to alternative land uses from 2015-2024. Parcels converted out of agriculture, farm and forest land are highlighted in red.



Conversion of Marion County, TN agriculture, farm and forest land to alternative uses (2015-2024)

Type of change	Number of parcels converted	Number of acres converted
Agriculture to Residential	36	1,790
Agriculture to Commercial	4	418
Agriculture to *Other	0	246
Farm to Residential	25	3,960
Farm to Commercial	8	612
Farm to *Other	3	746
Forest to Residential	15	702
Forest to Commercial	5	2,188
Forest to *Other	4	1,297
Totals	137	11,959

*Other includes city, county, state, federal, industrial, religious, educational, science, charity, state assessed, or local utility. Data source: Tennessee Comptroller of the Treasury and Marion County Assessor of Property.