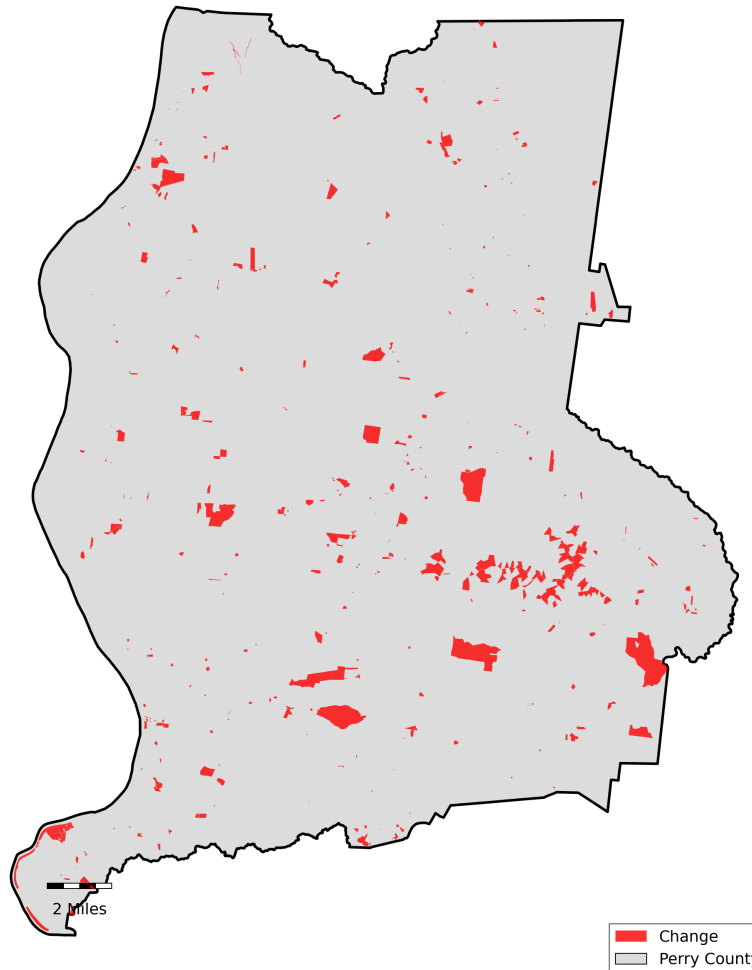


# Perry County, Tennessee

## Agriculture, Farm, and Forest Land Loss

### 2015-2024

This map displays Perry County, TN agriculture, farm and forest land parcels converted to alternative land uses from 2015-2024. Parcels converted out of agriculture, farm and forest land are highlighted in red.



Conversion of Perry County, TN agriculture, farm and forest land to alternative uses (2015-2024)

Type of change	Number of parcels converted	Number of acres converted
Agriculture to Residential	14	1,294
Agriculture to Commercial	0	49
Agriculture to *Other	1	20
Farm to Residential	26	4,500
Farm to Commercial	1	125
Farm to *Other	0	195
Forest to Residential	4	953
Forest to Commercial	0	3
Forest to *Other	0	192
<b>Totals</b>	<b>190</b>	<b>7,329</b>

\*Other includes city, county, state, federal, industrial, religious, educational, science, charity, state assessed, or local utility. Data source: Tennessee Comptroller of the Treasury and Perry County Assessor of Property.