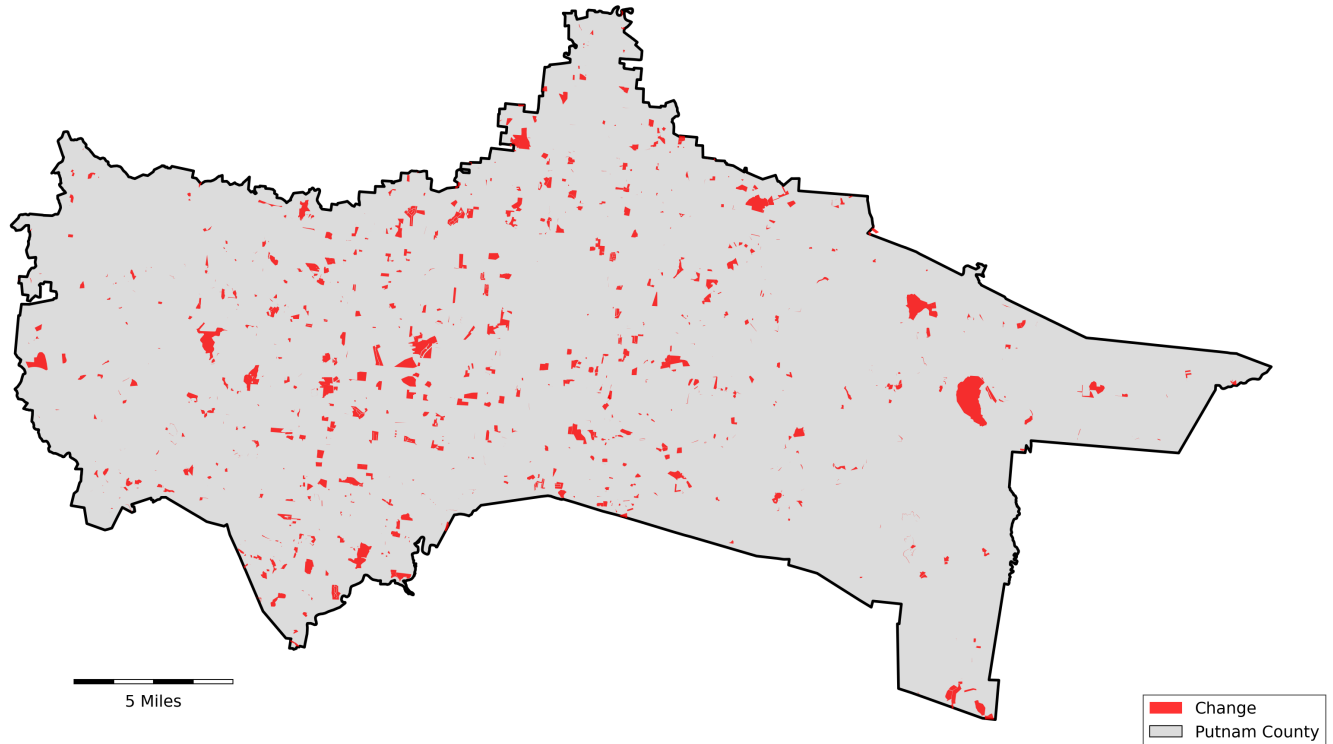


Putnam County, Tennessee

Agriculture, Farm, and Forest Land Loss

2015-2024

This map displays Putnam County, TN agriculture, farm and forest land parcels converted to alternative land uses from 2015-2024. Parcels converted out of agriculture, farm and forest land are highlighted in red.



Conversion of Putnam County, TN agriculture, farm and forest land to alternative uses (2015-2024)

Type of change	Number of parcels converted	Number of acres converted
Agriculture to Residential	148	4,664
Agriculture to Commercial	33	2,632
Agriculture to *Other	11	909
Farm to Residential	25	752
Farm to Commercial	2	118
Farm to *Other	1	93
Forest to Residential	0	0
Forest to Commercial	0	0
Forest to *Other	0	0
Totals	649	9,169

*Other includes city, county, state, federal, industrial, religious, educational, science, charity, state assessed, or local utility. Data source: Tennessee Comptroller of the Treasury and Putnam County Assessor of Property.