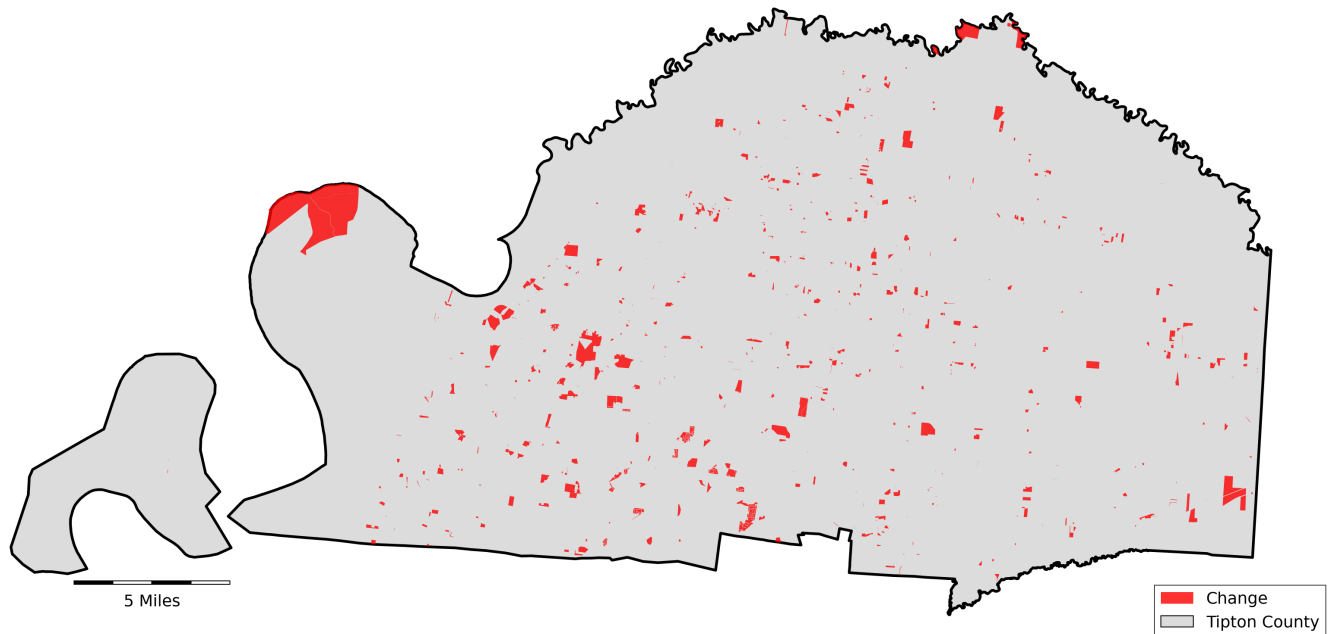


# Tipton County, Tennessee

## Agriculture, Farm, and Forest Land Loss

### 2015-2024

This map displays Tipton County, TN agriculture, farm and forest land parcels converted to alternative land uses from 2015-2024. Parcels converted out of agriculture, farm and forest land are highlighted in red.



Conversion of Tipton County, TN agriculture, farm and forest land to alternative uses (2015-2024)

| Type of change             | Number of parcels converted | Number of acres converted |
|----------------------------|-----------------------------|---------------------------|
| Agriculture to Residential | 110                         | 3,842                     |
| Agriculture to Commercial  | 6                           | 578                       |
| Agriculture to *Other      | 9                           | 2,497                     |
| Farm to Residential        | 8                           | 197                       |
| Farm to Commercial         | 0                           | 10                        |
| Farm to *Other             | 2                           | 338                       |
| Forest to Residential      | 0                           | 0                         |
| Forest to Commercial       | 0                           | 0                         |
| Forest to *Other           | 0                           | 0                         |
| <b>Totals</b>              | <b>361</b>                  | <b>7,462</b>              |

\*Other includes city, county, state, federal, industrial, religious, educational, science, charity, state assessed, or local utility. Data source: Tennessee Comptroller of the Treasury and Tipton County Assessor of Property.